

INDEX TO SHEETS

SHEET NO.	DESCRIPTION
G1.0	TITLE SHEET AND LAYOUT MAP
C1.0	SITE PLAN
C2.0	PAVING PLAN
C3.0	GEOMETRIC LAYOUT
C4.0	UTILITY PLAN
C5.0	CONCRETE JOINT PLAN
C6.0	GRADING PLAN
C7.0	DETENTION POND DETAIL
C8.0	WATER SERVICE STANDARD PLANS
C9.0	TYPICAL SECTIONS AND DETAILS
C10.0	MEDIAN OPENING REMOVAL PLAN
C11.0 & C12.0	SOIL BORING LOG
S1.0	STRUCTURAL LAYOUT AND DETAILS
E1.0	ELECTRICAL SYMBOLS & NOTES
E2.0	ELECTRICAL SCHEDULES AND ABBREVIATIONS
E3.0	ELECTRICAL SITE PLAN
E4.0	ELECTRICAL ONE LINE & DETAILS

STANDARD PLANS	REV. DATE
SP1 CB-01	11/2/2000
SP2 - SP4 CP-01	10/13/2021
SP5 - SP7 DW-01	8/4/2022
SP8 FN-01	11/2/2011
SP9 - SP13 PED-01	7/21/2022
SP14 PM-02	2/28/2019

TOTAL SHEETS = 32

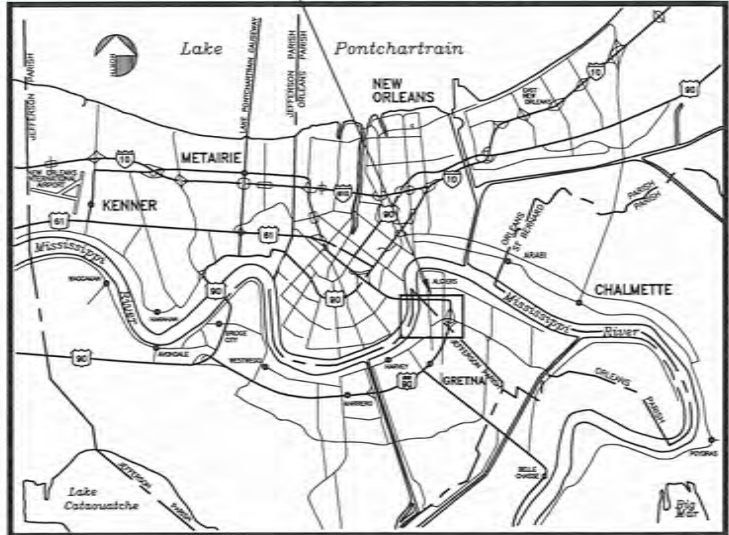
DATE	REVISION	DATE	RECOMMENDED	DATE	APPROVED

SCHEDULE OF REVISIONS

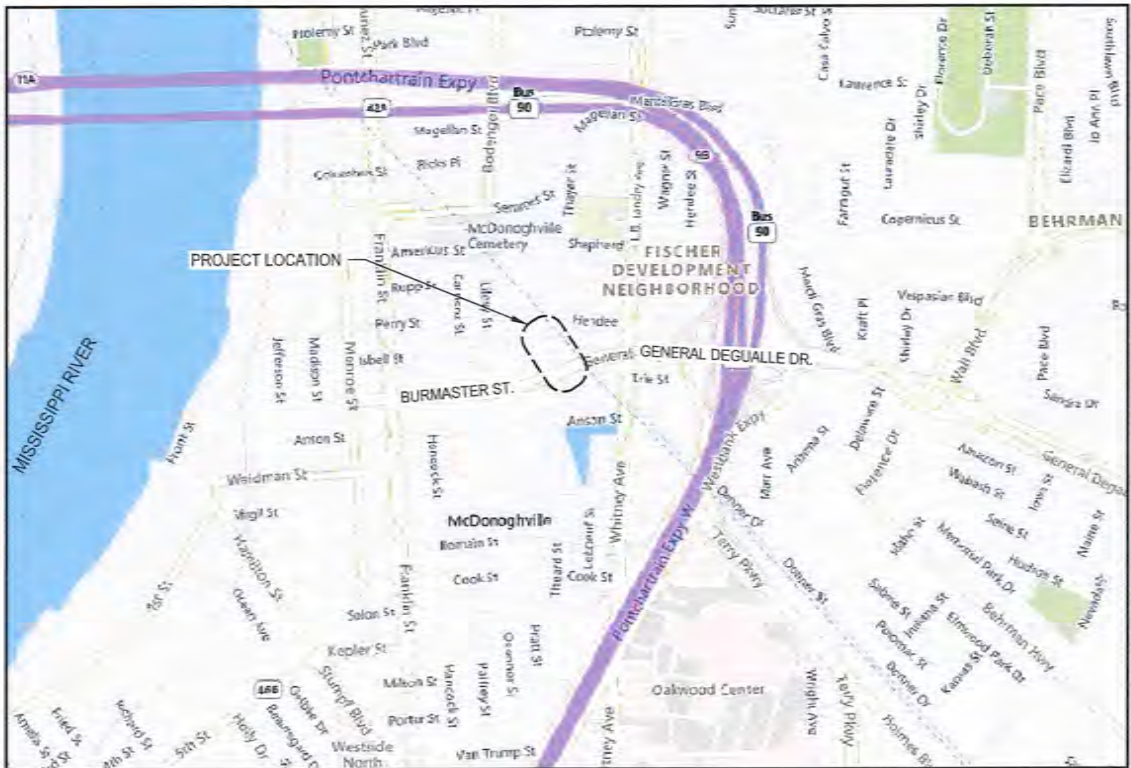


**BURMASTER TRANSFER FACILITY
BKI PROJECT 9344-8660
CITY OF GRETNA, LOUISIANA
February 2025**

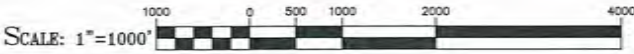
SEE LAYOUT MAP



VICINITY MAP
N.T.S.



LAYOUT MAP



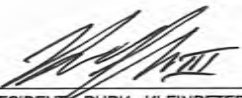

CITY OF GRETNA
MAYOR
BELINDA C. CONSTANT

COUNCIL MEMBERS

- | | |
|---------------------|-----------------------|
| WAYNE A. RAU | COUNCILMAN AT-LARGE |
| RUDY S. SMITH | COUNCILMAN DISTRICT 1 |
| MICHAEL A. HINYUB | COUNCILMAN DISTRICT 2 |
| MARK K. MILLER | COUNCILMAN DISTRICT 3 |
| JACKIE J. BERTHELOT | COUNCILMAN DISTRICT 4 |

DEPARTMENT OF PUBLIC WORKS
RON JOHNSON




 SENIOR VICE PRESIDENT, BURK-KLEINPETER, INC. 2/25/2025 DATE

 BELINDA C. CONSTANT, MAYOR
 CITY OF GRETNA, LOUISIANA 02/25/2025 DATE

PLANS PREPARED BY:



2/24/2025

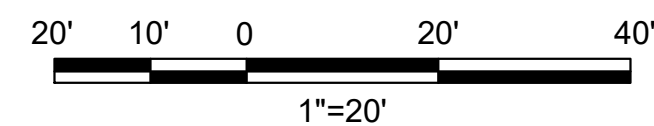
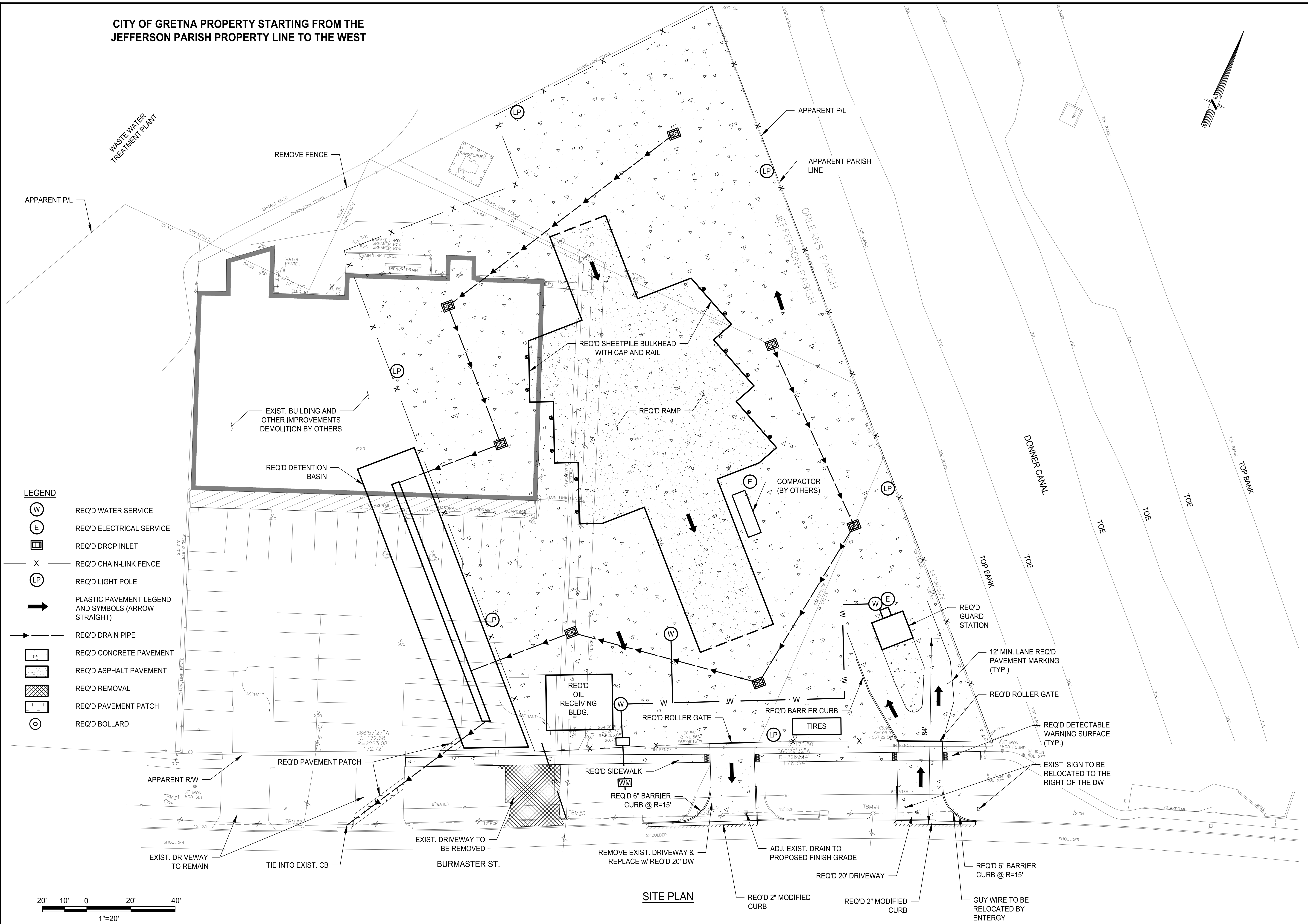
P:\9344\8660 BURMASTER TRANSFER FACILITY\02 DESIGN\02 CIVIL\01 DRAWING\G1.0_TITLE SHEET_01

CITY OF GRETNA PROPERTY STARTING FROM THE JEFFERSON PARISH PROPERTY LINE TO THE WEST

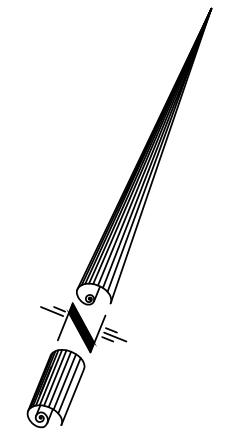
2/24/2025

P:\9\XXX\934\8660 BURMASTER TRANSFER FACILITY\02 DESIGN\02 CIVIL\01 DRAWING\IC1.0 SITE PLAN_01

- LEGEND**
- (W) REQ'D WATER SERVICE
 - (E) REQ'D ELECTRICAL SERVICE
 - REQ'D DROP INLET
 - X REQ'D CHAIN-LINK FENCE
 - (LP) REQ'D LIGHT POLE
 - ➔ PLASTIC PAVEMENT LEGEND AND SYMBOLS (ARROW STRAIGHT)
 - ➔ REQ'D DRAIN PIPE
 - ▨ REQ'D CONCRETE PAVEMENT
 - ▨ REQ'D ASPHALT PAVEMENT
 - ▨ REQ'D REMOVAL
 - ▨ REQ'D PAVEMENT PATCH
 - REQ'D BOLLARD



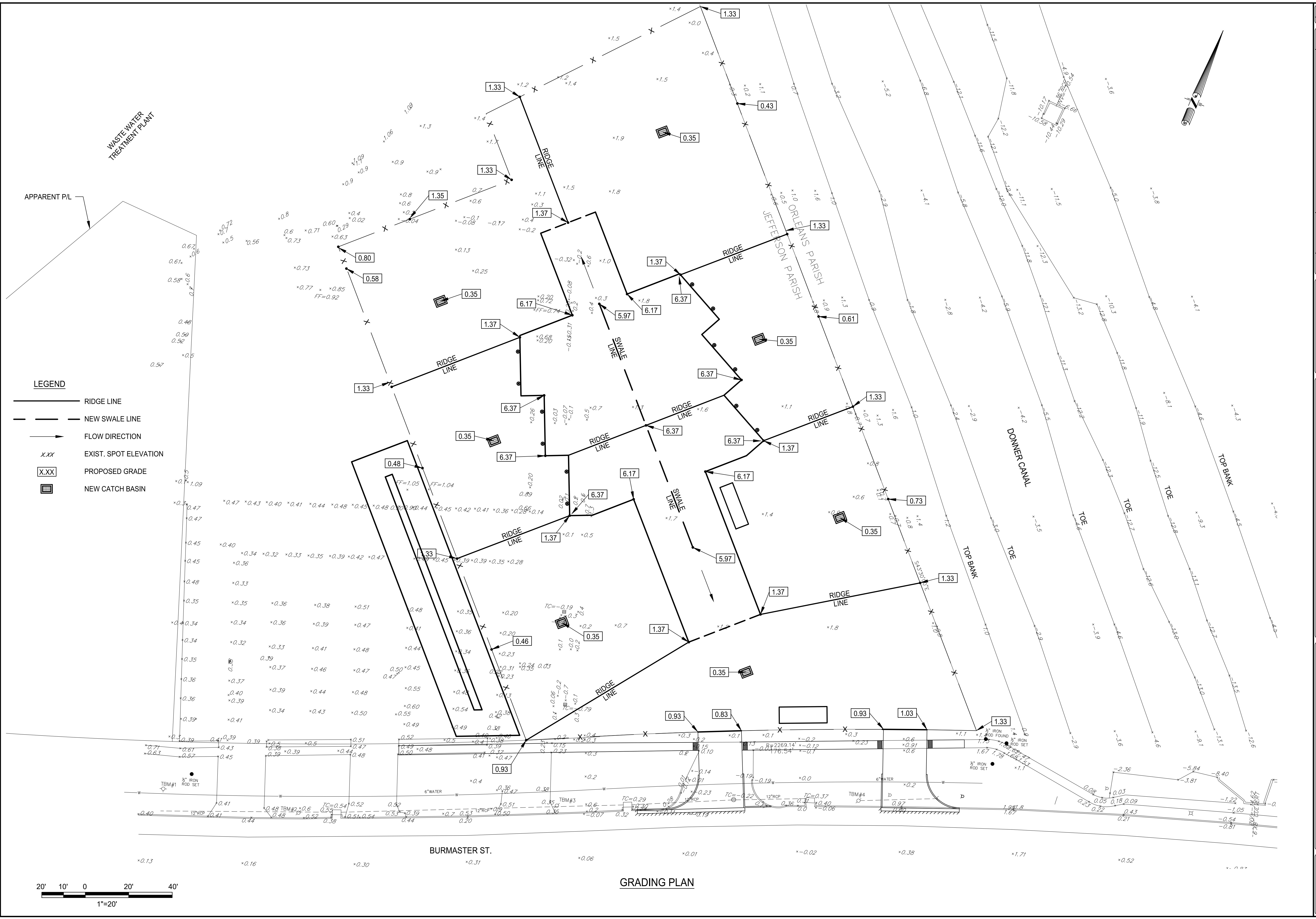
SITE PLAN



C1.0	
SHEET NUMBER	
	BY
	NO.
	DATE
	REVISION DESCRIPTION
2-25-2025	
DESIGNED TJK CHECKED RCIII DATE FEBRUARY, 2025 SHEET 1 OF 1	CLIENT PROJECT NO. : XXXXXXXX BKI # : 9344-8660
CITY OF GRETNA BURMASTER TRANSFER FACILITY SITE PLAN	

2/24/2025

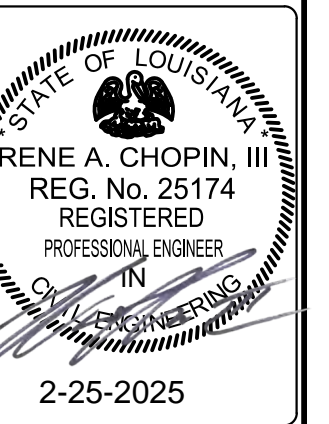
P:\9\XXX\934\8660 BURMASTER TRANSFER FACILITY\02_DESIGN\02_CIVIL\01_DRAWING\02_C6.0_GRADING PLAN



C6.0

SHEET NUMBER

NO.	DATE	REVISION DESCRIPTION



BKJ BURK-KLEINPETER, INC.
ENGINEERING PLANNING ENVIRONMENTAL

BRUSA.COM

DESIGNED	TJK	CHECKED	RC/III	DATE	FEBRUARY, 2025
SG	TJK	SG	TJK	SHEET	1 OF 1

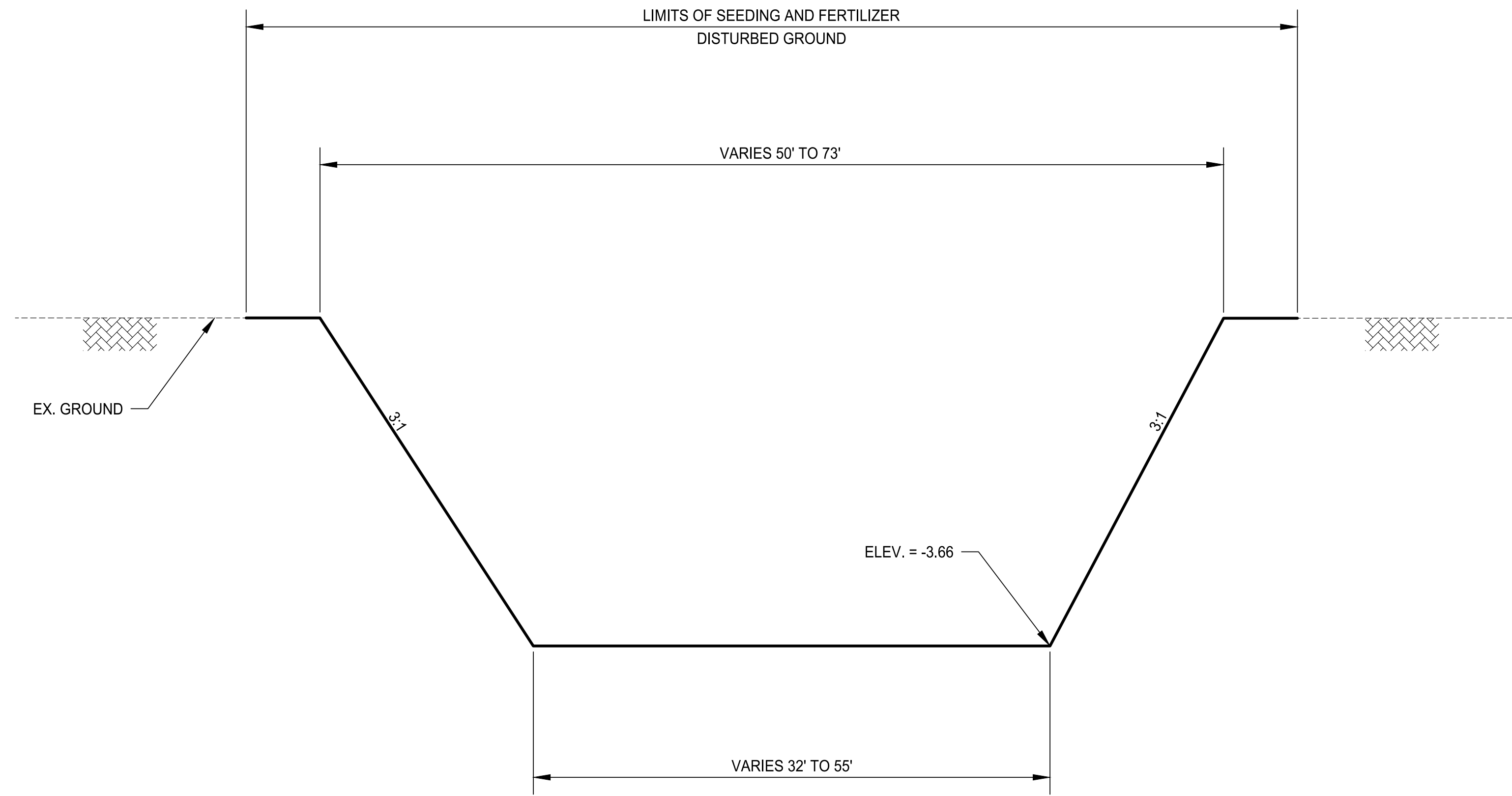
CLIENT PROJECT NO. : XXXXXXXX

BKI # : 9344-8660

CITY OF GRETNA
BURMASTER TRANSFER FACILITY

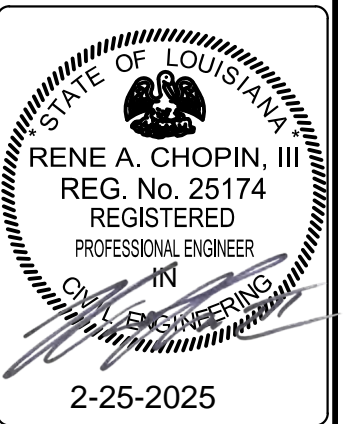
GRADING PLAN

NOTES:
1. SEE UTILITY PLAN FOR INLET AND OUTFALL INFORMATION.



DETENTION POND DETAILS
N.T.S

C7.0			
SHEET NUMBER			
NO.	DATE	REVISION DESCRIPTION	BY



BKJ BURK-KLEINPETER, INC.
ENGINEERING PLANNING ENVIRONMENTAL

BRUBA.COM

DESIGNED	CHECKED	DATE	DATE
			February, 2025
			OF
			SHEET

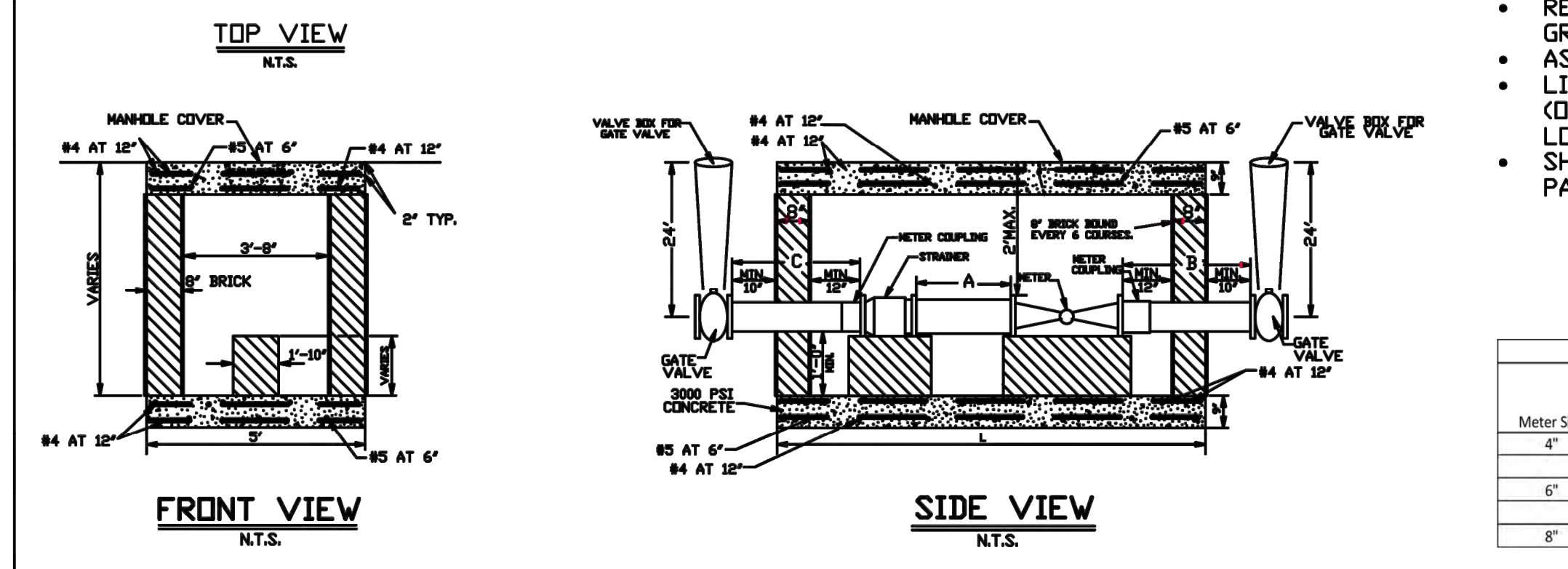
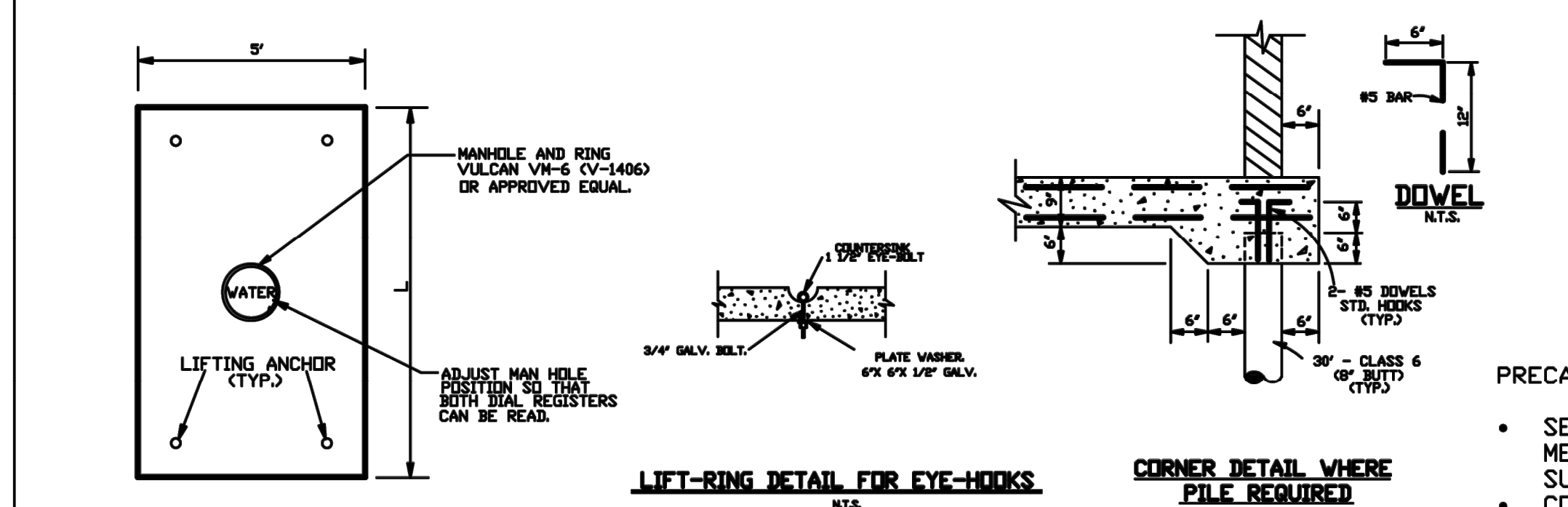
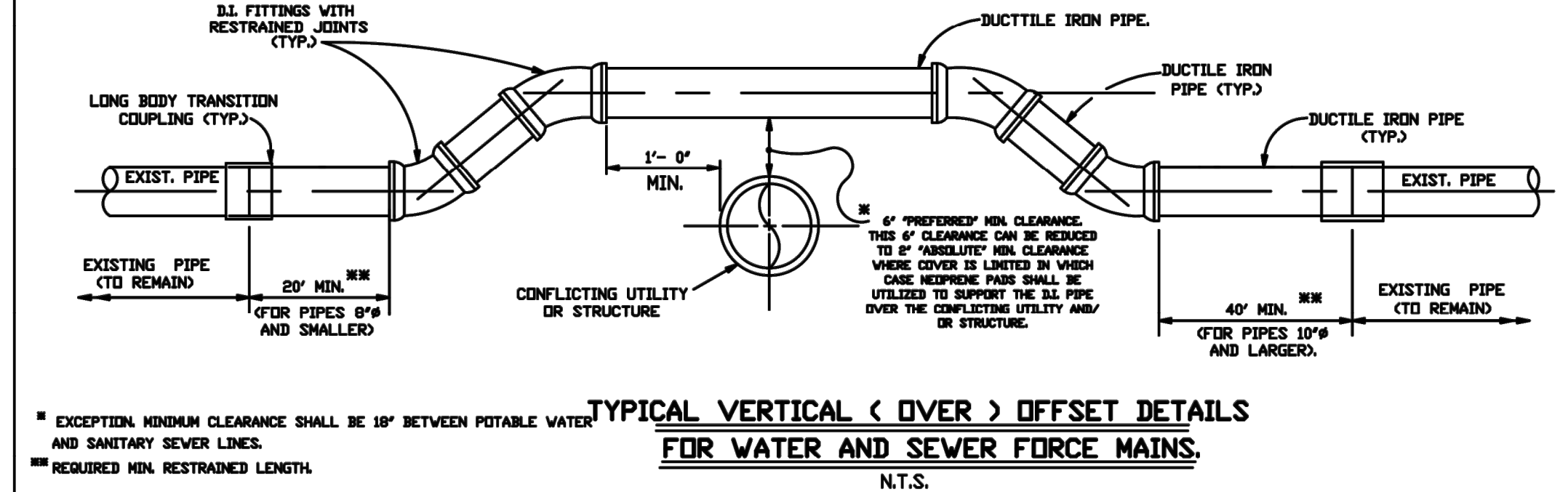
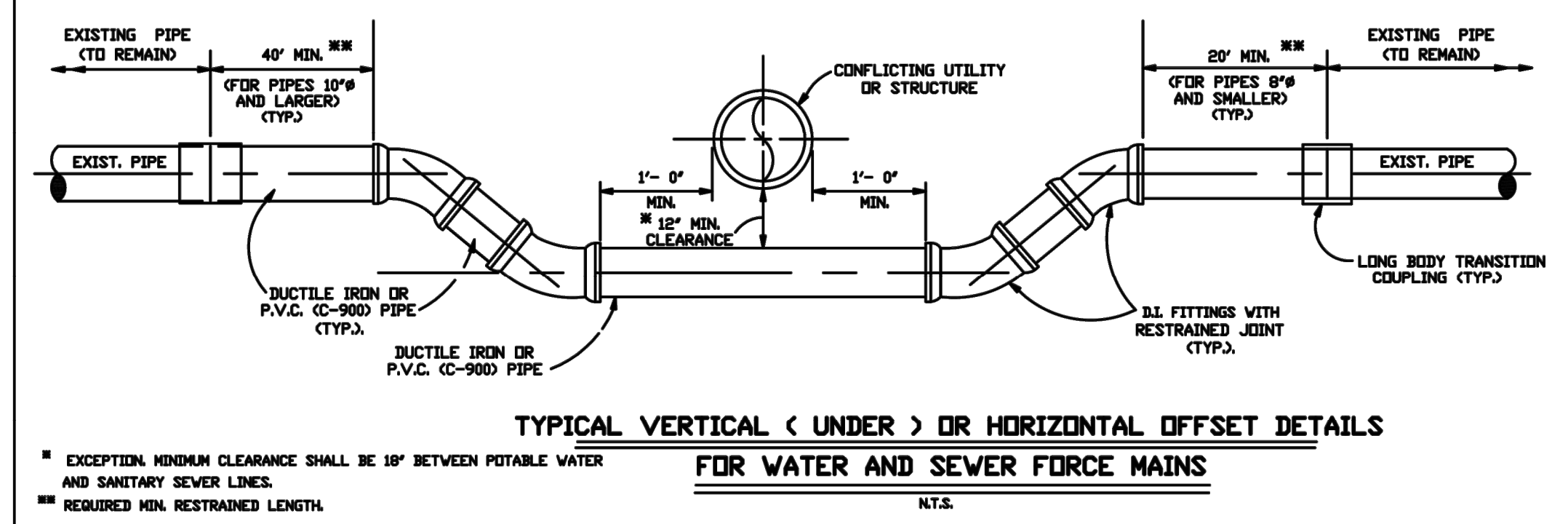
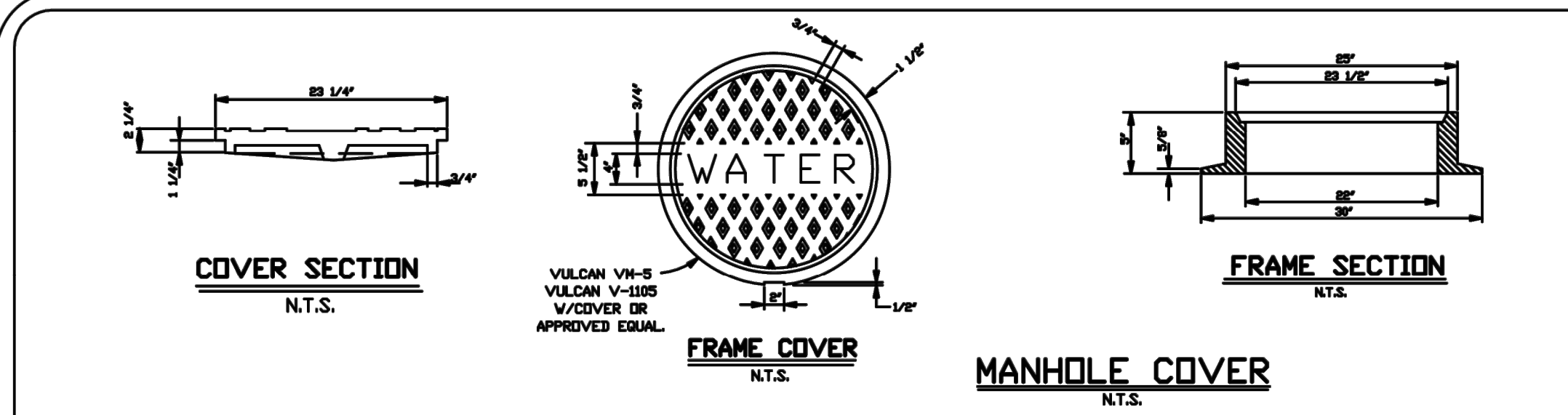
CLIENT PROJECT NO. : XXXXXXXX BKI # : 9344-8660

CITY OF GRETNA
BURMASTER TRANSFER FACILITY
DETENTION POND DETAIL

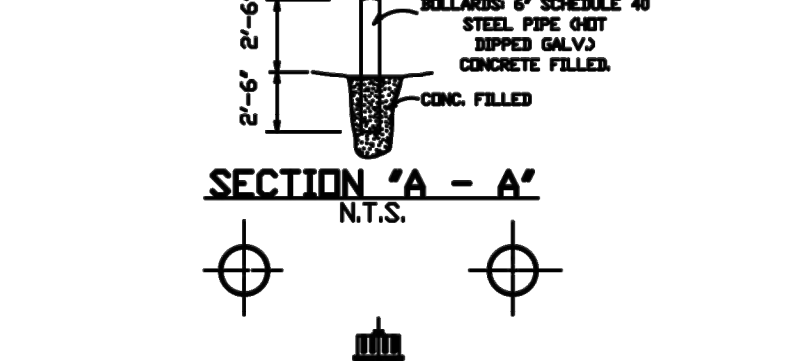
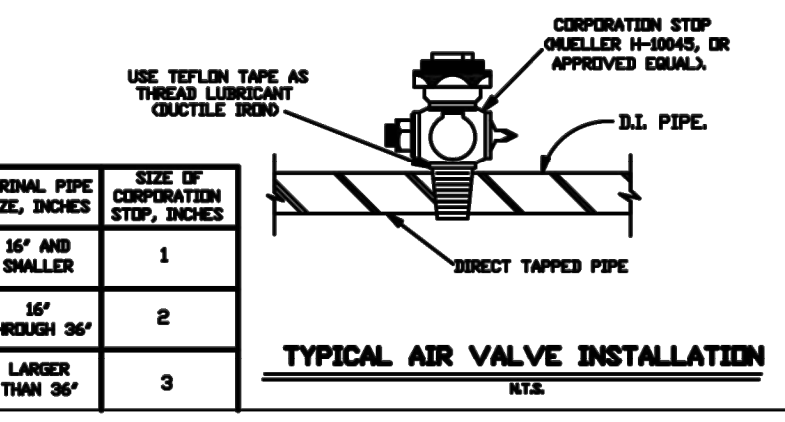
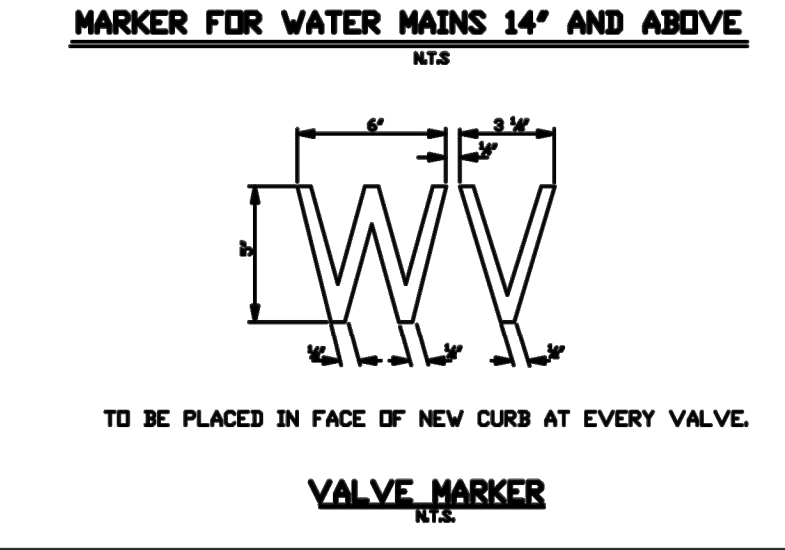
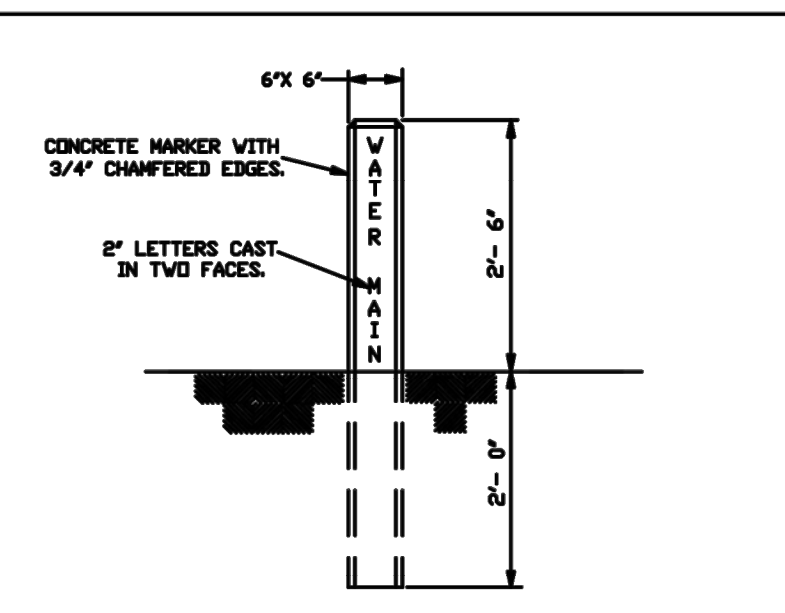


2/24/2025

P:\9XXX\93448660 BURMASTER TRANSFER FACILITY\02 DESIGN\02 CIVIL\01 DRAWING\02 STANDARD PLANS_01

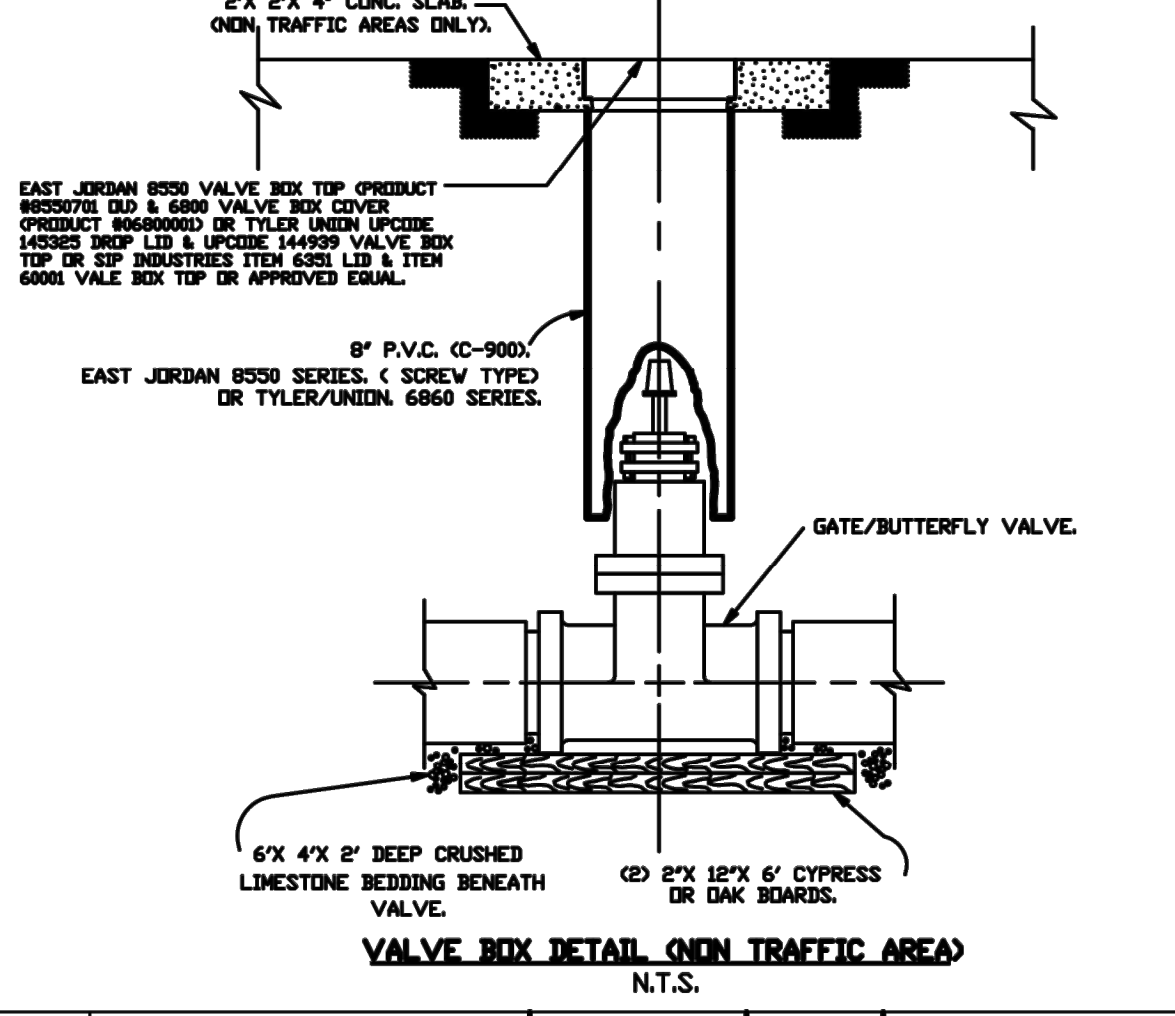
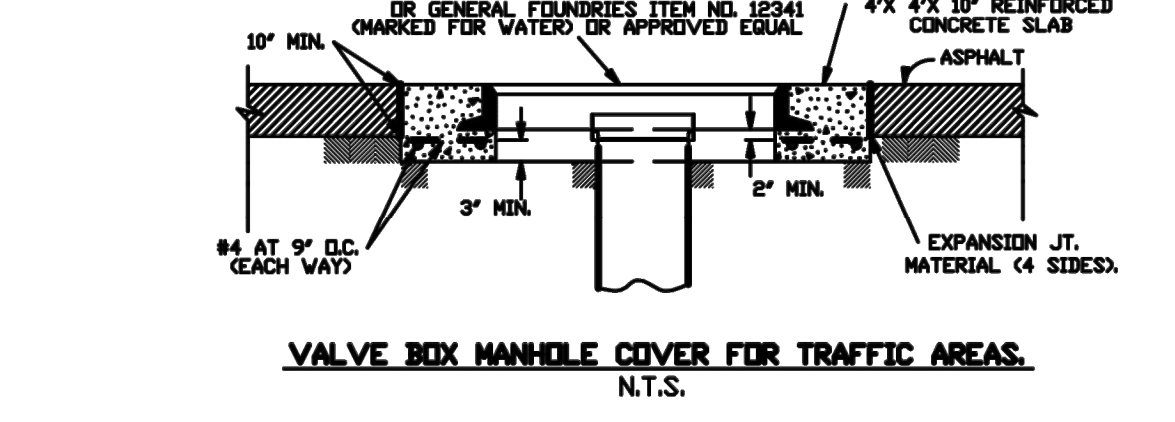
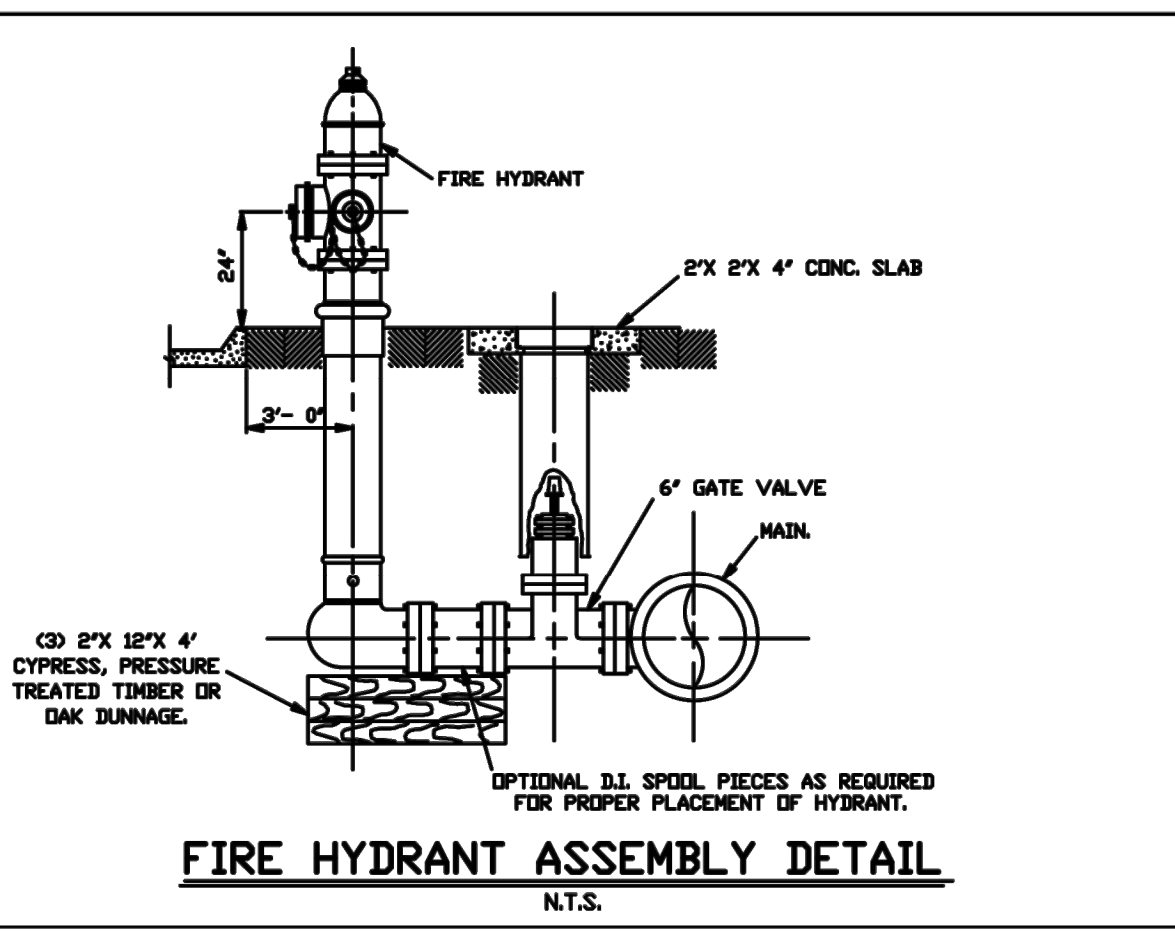


BRICK METER BOX FOR 4' AND LARGER METERS

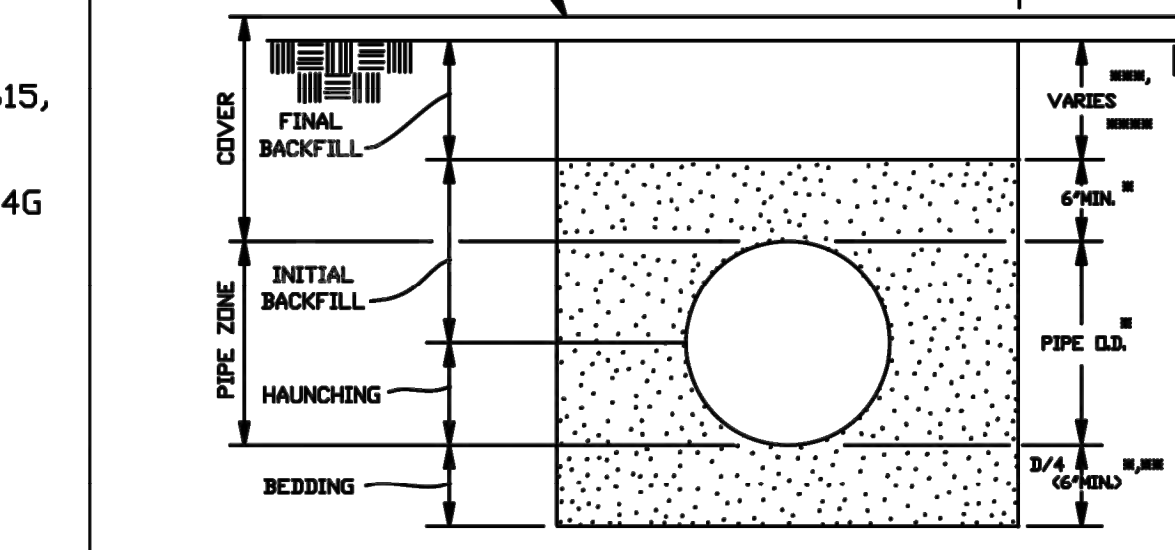


- PRECAST METER BOX OPTION SPECIFICATIONS:
- SELF-CONSOLIDATING CONCRETE CONTAINING ADMIXTURES MEETING ASTM C494 TYPE A TO ENSURE UNIFORM SUSPENSION OF AGGREGATES THROUGHOUT.
 - CONCRETE STRENGTH - 5,000 PSI (MIN.) @28 DAYS.
 - REINFORCING STEEL: #4,5, AND 6 BAR PER ASTM A-615, GRADE 60.
 - ASTM-A48 C-35 H-20/AASHTO M-306.
 - LIFTING ANCHOR BY A.L.PATTERSON, INC. MODEL#LU64G (OR APPROVED EQUAL) WITH MINIMUM SAFE WORKING LOAD OF 4,460 LBS PER ANCHOR.
 - SHOP DRAWINGS MUST BE SUBMITTED TO JEFFERSON PARISH FOR APPROVAL.

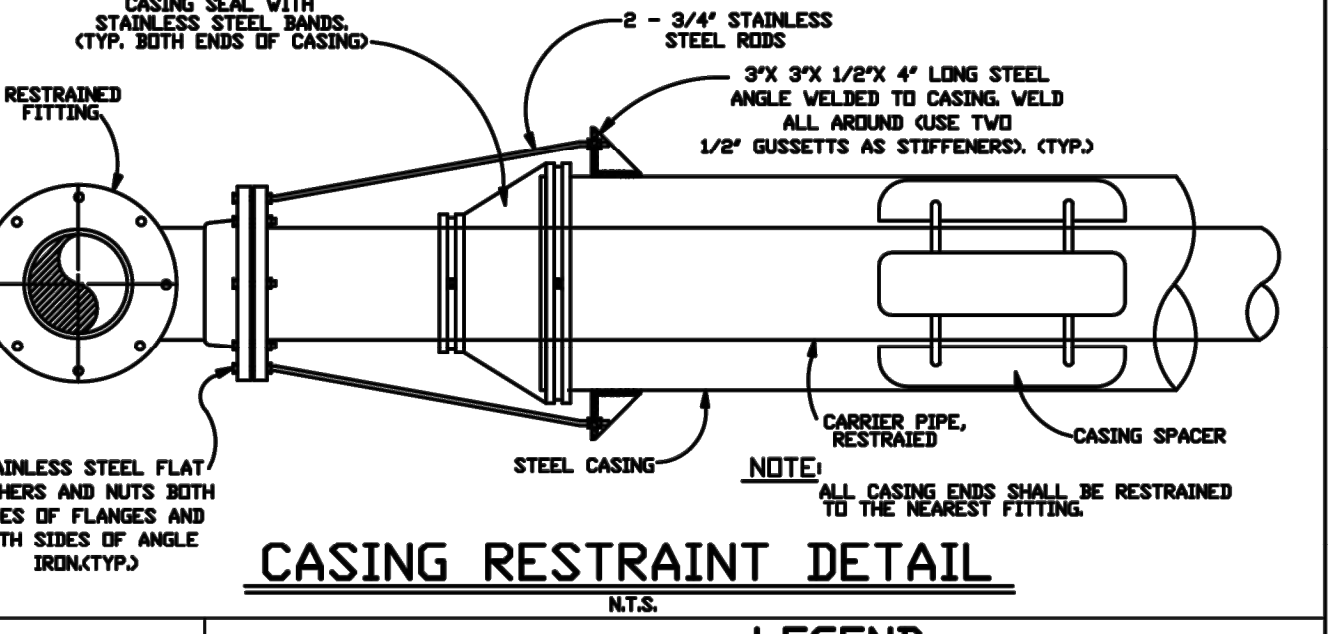
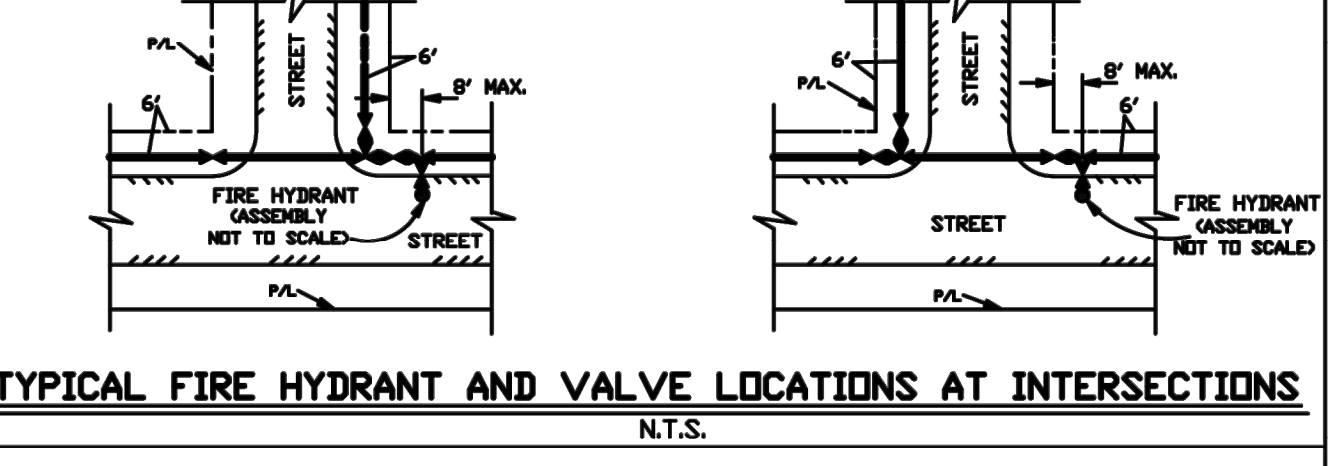
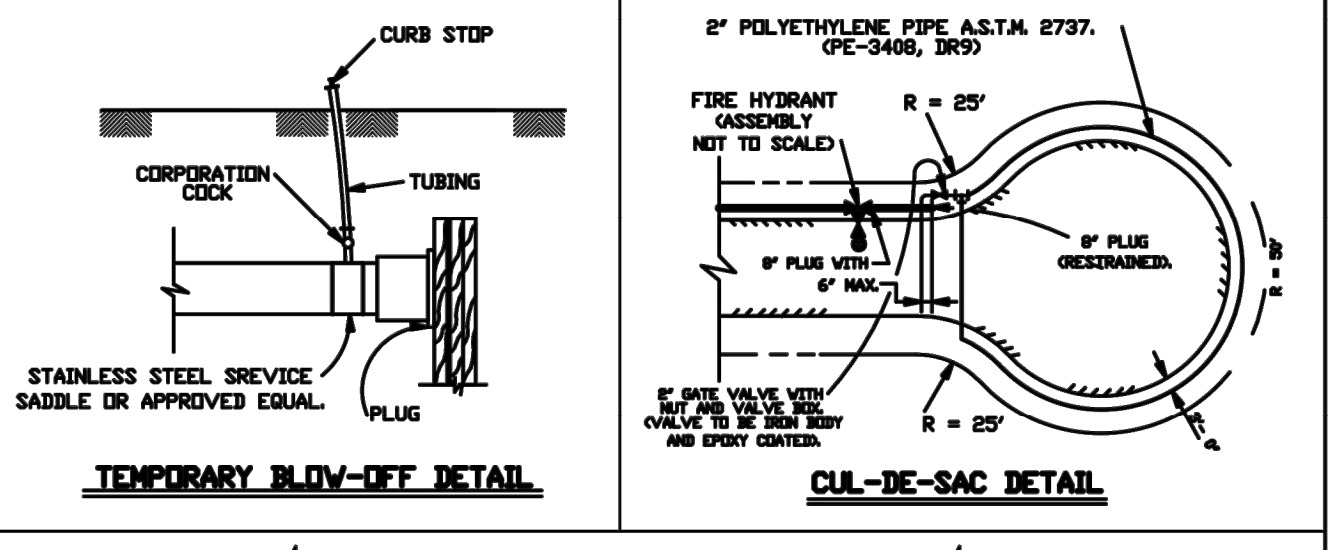
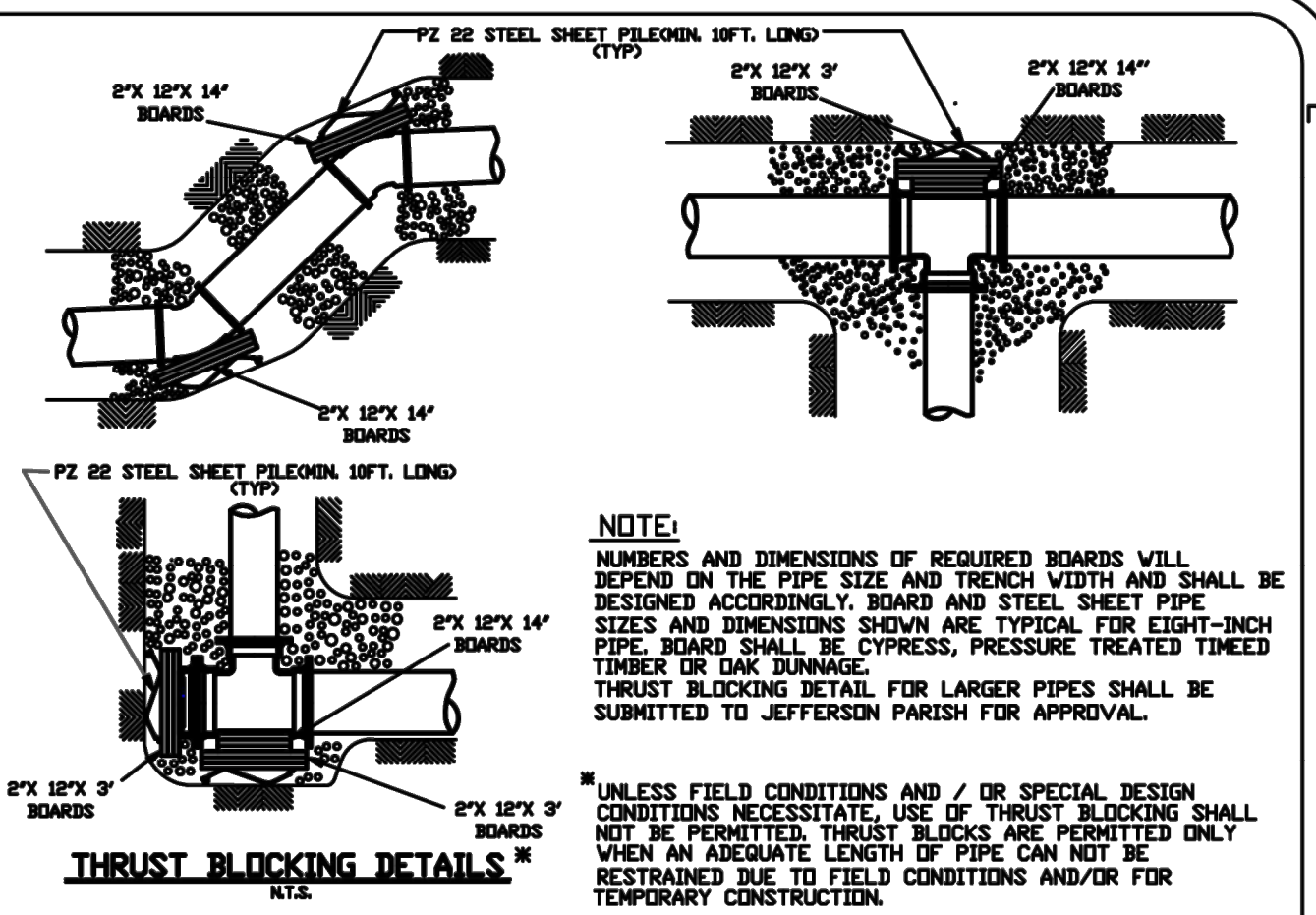
Meter Size	Approximate Meter Length (in.)	Approximate Strainer Length (in.)	Min. A (in.)	Min. B (in.)	Min. C (in.)	Min. L (in.)	Min. L (ft. - in.)
4"	20	20	20	30	30	98	8' - 2"
6"	24	24	30	30	30	116	9' - 8"
8"	30	30	40	40	30	143	11' - 11"



MIN. COVER	PIPE SIZE (IN.)
3 FT.	8-10
4 FT.	>12



NOTES:
 1. WHERE GROUND WATER OR UNSTABLE TRENCH BOTTOM EXISTS, TRENCH BOTTOM SHALL BE STABILIZED (ASTM D698) TO PROVIDE A WORKING PLATFORM.
 2. TRENCH DETAIL SHALL BE MIN. REQUIREMENTS TO SAFEGUARD THE INTEGRITY OF THE WATER LINE INSTALLATION AT HEREIN-SPECIFIED DEPTHS. THE CONTRACTOR SHALL PROVIDE SUFFICIENT SHEETING AND BRACING TO PROVIDE SAFE WORKING CONDITIONS FOR HIS WORKMEN.



LEGEND:

EXISTING	PROPOSED	DESCRIPTION
[Symbol]	[Symbol]	TEE, VALVE AND FIRE HYDRANT ASSEMBLY, FLANGED OR RESTRAINED MECHANICAL JOINT, GATE VALVE.
[Symbol]	[Symbol]	BUTTERFLY VALVE.
[Symbol]	[Symbol]	CROSS.
[Symbol]	[Symbol]	TEE.
[Symbol]	[Symbol]	TAPPING SLEEVE AND VALVE.
[Symbol]	[Symbol]	REDUCER.
[Symbol]	[Symbol]	BEND.

ORIGINAL 05/21/96

JEFFERSON PARISH DEPARTMENT OF ENGINEERING

WATER AND SEWER FORCE MAIN STANDARD DETAILS

REVISION	DATE	BY	DATE	BY	DATE	BY	DATE
1	03/07/12	J.C.	05/21/96	H.J.W.	02/20/03		
2	01-08-15	J.C.	02/09/04	P.D.	02/11/04		
3	12-28-17	CHS	03/12/07	J.L.	08/24/09		
4		CHS	01/30/09	CHS	08/24/09		

NOTES:
 1. WHERE GROUND WATER OR UNSTABLE TRENCH BOTTOM EXISTS, TRENCH BOTTOM SHALL BE STABILIZED (ASTM D698) TO PROVIDE A WORKING PLATFORM.
 2. TRENCH DETAIL SHALL BE MIN. REQUIREMENTS TO SAFEGUARD THE INTEGRITY OF THE WATER LINE INSTALLATION AT HEREIN-SPECIFIED DEPTHS. THE CONTRACTOR SHALL PROVIDE SUFFICIENT SHEETING AND BRACING TO PROVIDE SAFE WORKING CONDITIONS FOR HIS WORKMEN.

FILE NUMBER: 1746D

WATER(2000).DWG

SHEET NO. 1 OF 1

C8.0 SHEET NUMBER

REVISION DESCRIPTION

DATE

NO.

STATE OF LOUISIANA

RENE A. CHOPIN, III
 REG. No. 25174
 REGISTERED PROFESSIONAL ENGINEER

2-25-2025

BURK-KLEINPETER, INC. ENVIRONMENTAL PLANNING

DESIGNED: RP
 CHECKED: RP
 DATE: February, 2025
 SHEET: 1 OF 1

CLIENT PROJECT NO.: XXXXXXXX

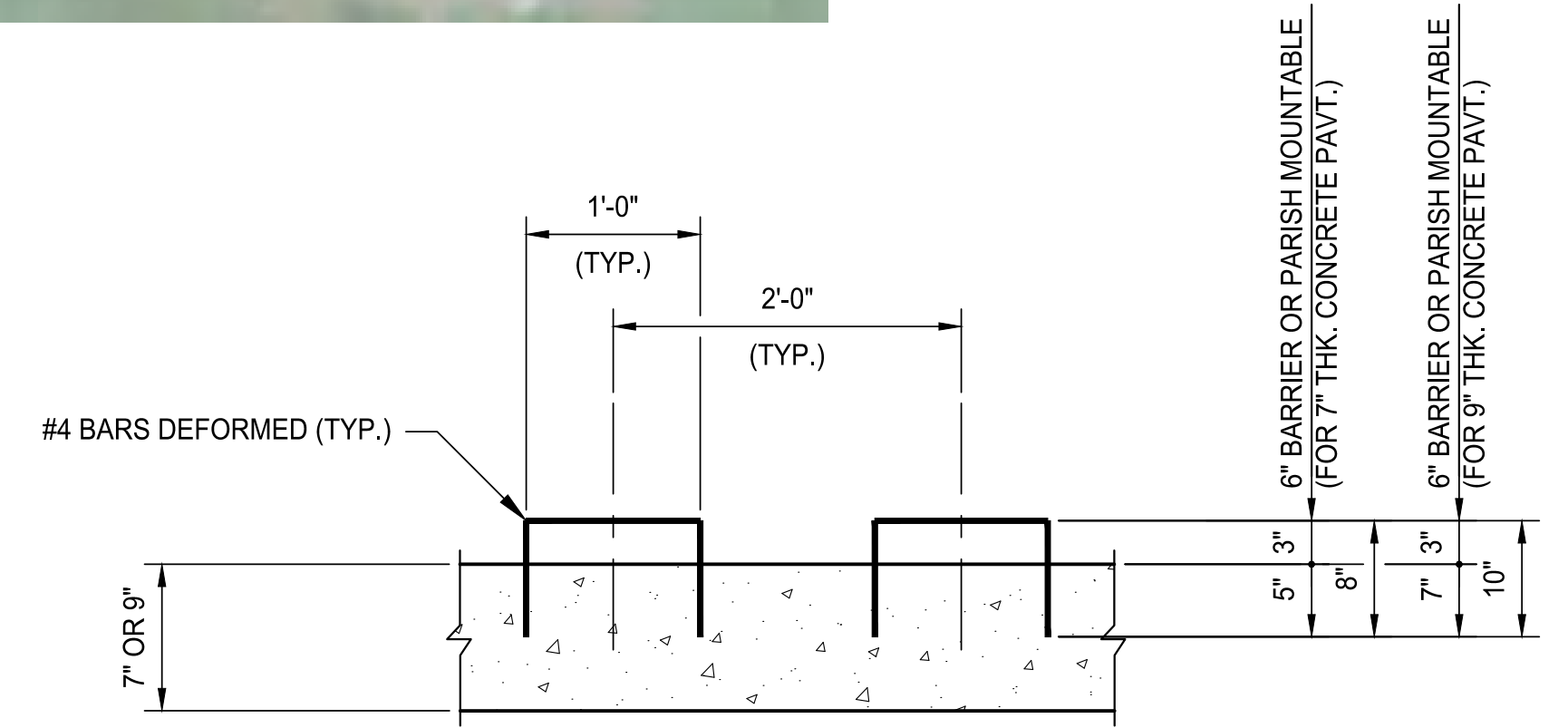
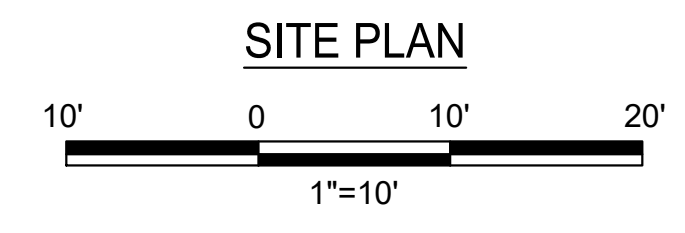
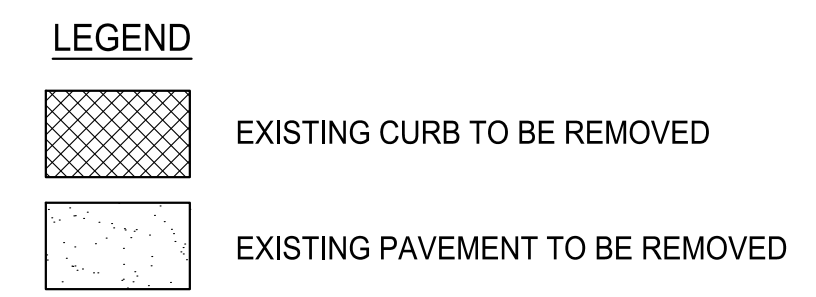
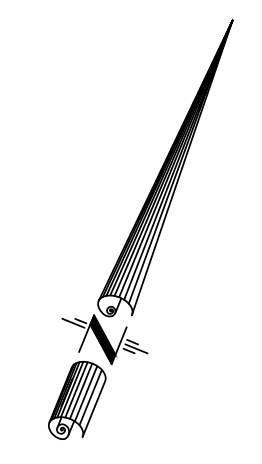
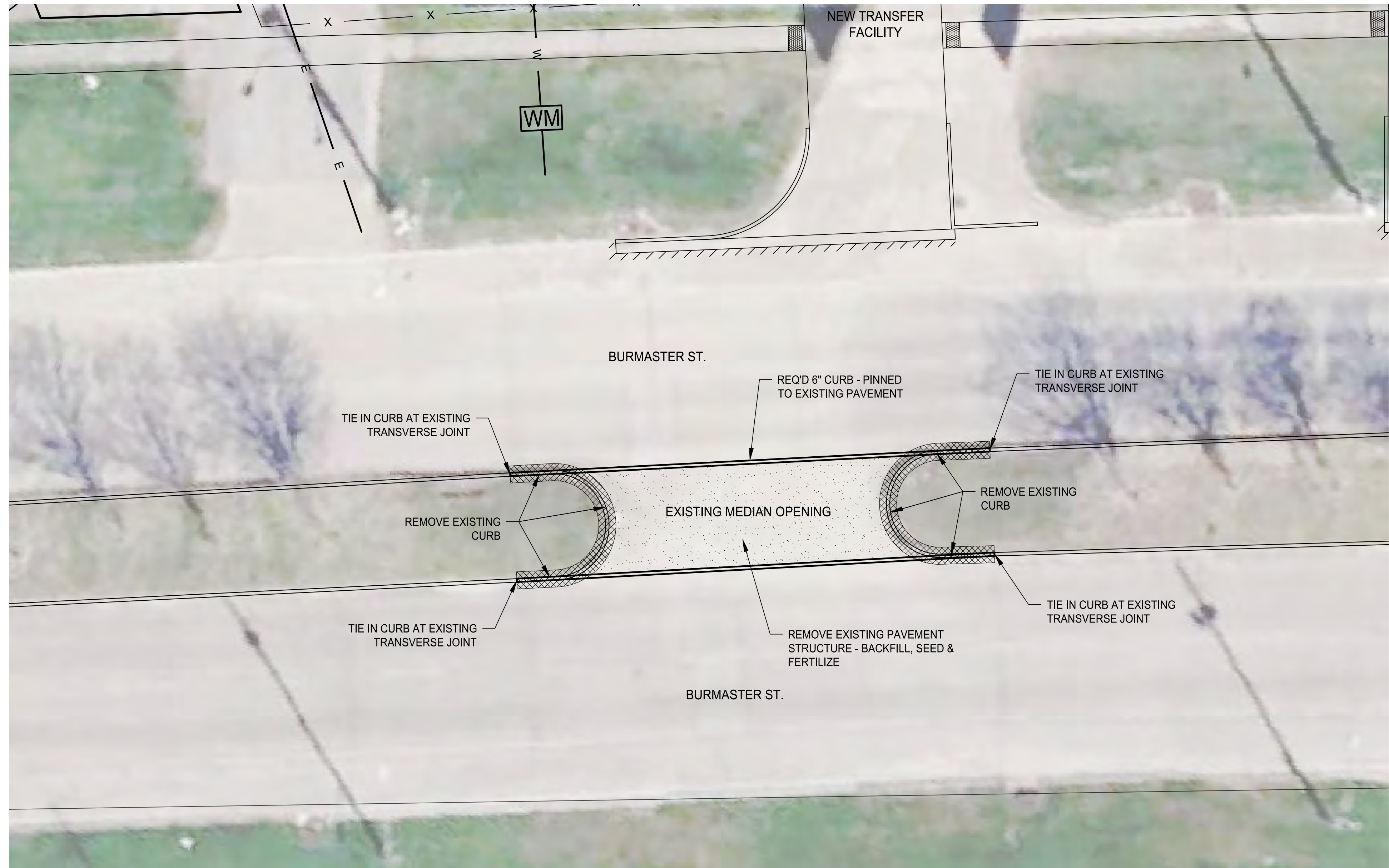
BKI #: 9344-8660

CITY OF GRETTA
 BURMASTER TRANSFER FACILITY

STANDARD PLANS

LOUISIANA

THESE STANDARD PLANS HAVE BEEN PROPERLY EXAMINED BY ME, THE UNDERSIGNED LOUISIANA PROFESSIONAL ENGINEER. I HAVE DETERMINED THAT THESE PLANS COMPLY WITH ALL APPLICABLE LOUISIANA CODES AND HAVE BEEN PROPERLY SITE ADAPTED TO USE IN THIS AREA.



NOTE:
1. FULL DEPTH SAW CUT REQUIRED AT LIMITS OF REMOVAL

PIN DETAILS FOR 6" BARRIER CURB

C10.0		BY
SHEET NUMBER		REVISION DESCRIPTION
NO.	DATE	

BKJ BURK-KLEINPETER, INC.
ENGINEERING PLANNING ENVIRONMENTAL

RENE A. CHOPIN, III
REG. No. 25174
REGISTERED PROFESSIONAL ENGINEER
IN CIVIL ENGINEERING
2-25-2025

CLIENT PROJECT NO. : XXXXXXXX
BKJ # : 9344-8660

DESIGNED TJK
CHECKED RCIII
DATE SHEET
February, 2025
1 OF 1

CITY OF GRETN
BURMASTER TRANSFER FACILITY
MEDIAN OPENING REMOVAL PLAN

2/24/2025

P:\9XXX\93448660 BURMASTER TRANSFER FACILITY\02 DESIGN\02 CIVIL\01 DRAWING\11.0-C\12.0 SOIL BORING_01

ARD LOG01 01R 6280G.GPJ LOG01R.GDT 7/25/24

Gretna-Burnmaster Transfer Facility
Adjacent to 1201 Burnmaster St.
Gretna, Louisiana

LOG OF SOIL BORING B-1

File: 6280G
Date: 6/24/24
Logged by: E.J. Laizer
Driller: T.Roche
Rig: BETA

Burk-Kleinpeter, Inc.
2400 Veterans Blvd. Suite 310
Kenner, La.

The Beta Group
engineering and construction services

Sheet 1 of 2

FIELD DATA			LABORATORY DATA						Soil Type	Description
Ground Water Level	Depth (feet)	Samples	Compressive Strength (tsf)	Water Content (%)	Wet Unit Weight (pcf)	Atterberg Limits				
						LL	PL	PI		
		33 b/f 10-15-18		9					21	Dense Gray SILTY SAND (SM) with Clay, Rocks, and Shell Fragments into Asphalt (5 Inches)
		10 b/f 6-6-4		14						Stiff Gray SILTY CLAY (CL) with Shell Fragments and Rocks
		1.75 (P)	0.60	53	101	114	36	78		Medium Stiff Gray CLAY (CH) with Silt, Shell Fragments, Rocks, and Wood
	-5	1.5 (P)	0.65	41	112					Very Soft to Soft Gray CLAY (CH) with Wood and Organics
		0.5 (P)	0.21	69	96					
	-10	0.75 (P)	0.22	87	93					
	-15	0.5 (P)	0.27	78	94					
	-20	0.5 (P)		73						
	-25	0.5 (P)	0.26	72	96	111	25	86		
	-30	0.5 (P)		63						Soft Gray CLAY (CH)
	-35	0.5 (P)	0.35	67	98					
	-40	0.5 (P)		62						



Ground Water Level Data

Free water first encountered

Water level after 15 mins.

Boring Advancement Method

4" Nom. Dia. Short Flight Auger: 0 to 10 ft.
4" Dia. Rotary Wash: 10 to 80 ft.

Boring Abandonment Method

Borehole grouted with cement/bentonite upon completion

Notes

Continued Next Page

Strata Boundaries and Sample Lengths May Not Be Exact

C11.0 SHEET NUMBER

NO.	DATE	REVISION DESCRIPTION

BURK-KLEINPETER, INC. ENVIRONMENTAL PLANNING

BRUSA.COM

DESIGNED: FA
CHECKED: RP

DATE SHEET: February, 2025 1 OF 2

CLIENT PROJECT NO.: XXXXXXXX

BKI #: 9344-8660

CITY OF GRETNA
BURMASTER TRANSFER FACILITY

SOIL BORING



ARD LOG01 01R 6280G.GPJ LOG01R.GDT 7/25/24

Gretna-Burnmaster Transfer Facility
Adjacent to 1201 Burnmaster St.
Gretna, Louisiana

LOG OF SOIL BORING B-1

File: 6280G
Date: 6/24/24
Logged by: E.J. Laizer
Driller: T.Roche
Rig: BETA

Burk-Kleinpeter, Inc.
2400 Veterans Blvd. Suite 310
Kenner, La.

The Beta Group
engineering and construction services

Sheet 2 of 2

FIELD DATA			LABORATORY DATA						Soil Type	Description
Ground Water Level	Depth (feet)	Samples	Compressive Strength (tsf)	Water Content (%)	Wet Unit Weight (pcf)	Atterberg Limits				
						LL	PL	PI		
										Soft Gray CLAY (CH)
	-45	0.5 (P)	0.38	66	101					
	-50	0.5 (P)		56						
	-55	<0.25 (P)	0.12	26	110				46	Loose Gray CLAYEY SAND (SC)
	-60	4 b/f 2-2-2		37					36	
	-65	4 b/f 2-3-1		35						
	-70	1.0 (P)	0.50	39	112					Soft Gray CLAY (CH) with Sand
	-75	1.25 (P)		30						Medium Stiff Gray SILTY CLAY (CL) with Shell Fragments and Sand
	-80	1.5 (P)	0.67	24	125					



Ground Water Level Data

Free water first encountered

Water level after 15 mins.

Boring Advancement Method

4" Nom. Dia. Short Flight Auger: 0 to 10 ft.
4" Dia. Rotary Wash: 10 to 80 ft.

Boring Abandonment Method

Borehole grouted with cement/bentonite upon completion

Notes

Boring completed at 80 ft.

Strata Boundaries and Sample Lengths May Not Be Exact

2/24/2025

SYMBOL SCHEDULE

LIGHTING SYMBOLS

	DESCRIPTION
	SINGLE ARM ROADWAY LUMINAIRE. LETTER DENOTES LUMINAIRE TYPE. SEE LUMINAIRE SCHEDULE.
	LED LIGHT FIXTURE. LETTER DENOTES FIXTURE TYPE. SEE FIXTURE SCHEDULE.
	EMERGENCY LED LIGHT FIXTURE. LETTER DENOTES FIXTURE TYPE. SEE FIXTURE SCHEDULE.
	LED STRIP LIGHT FIXTURE. LETTER DENOTES FIXTURE TYPE. SEE FIXTURE SCHEDULE.
	LED LIGHT FIXTURE. LETTER DENOTES FIXTURE TYPE. SEE FIXTURE SCHEDULE.

WIRING SYMBOLS

	DESCRIPTION
	WIRING (IN CONDUIT) CONCEALED IN CEILING OR WALL.
	WIRING (IN CONDUIT) RUN EXPOSED.
	WIRING (IN CONDUIT) CONCEALED IN OR UNDER FLOOR.
	WIRING UNDERGROUND (SITE WORK).
	WIRING OVERHEAD (SITE WORK).
	SEWER LINE.
	DRAIN LINE.
	WATER LINE.
	HOMERUN TO PANELBOARD WITH NOMENCLATURE (LETTERS), CIRCUIT NUMBERS (NUMBERS), NUMBER OF CIRCUITS (NUMBER OF ARROWS), EACH CIRCUIT TO HAVE GROUND.
	CORD WIRE TO EQUIPMENT AND PLUG.
	GROUND CONNECTION
	SINGLE-POLE TOGGLE SWITCH. LETTER DENOTES FIXTURE CONTROLLED.
	SWITCH, MOTOR RATED.
	DIGITAL TIMER SWITCH
	PHOTO CELL.
	CONDUIT TURNED UP.
	CONDUIT TURNED DOWN.
	CONDUIT STUBBED OUT.
	PULL BOX. NEMA CONFIGURATION AS NOTED.
	PANELBOARD.
	GROUND SYSTEM TEST WELL WITH GROUND ROD CONNECTION
	EXOTHERMIC WELD GROUND ROD CONNECTION
	EXOTHERMIC WELD CONNECTION

MISC. SYMBOLS

	DESCRIPTION
	TO BE REMOVED

POWER SYMBOLS

	DESCRIPTION
	DUPLEX OUTLET.
	SPLIT WIRED DUPLEX OUTLET.
	QUAD OUTLET.
	SPECIAL OUTLET. LETTER DENOTE RECEPTACLE TYPE
	BRANCH CIRCUIT PANELBOARD.
	DISTRIBUTION PANELBOARD.
	DISCONNECT SWITCH. FUSED UNLESS OTHERWISE NOTED.
	COMBINATION STARTER/DISCONNECT SWITCH. FUSED UNLESS OTHERWISE NOTED.
	MOTOR, SINGLE-PHASE.
	MOTOR, THREE-PHASE.
	JUNCTION BOX.
	JUNCTION BOX, WALL MOUNTED.
	JUNCTION BOX WITH WHIP TO EQUIPMENT.

ONE-LINE SYMBOLS

	DESCRIPTION
	METER ENCLOSURE.
	METER.
	CIRCUIT BREAKER.
	SWITCH, SINGLE POLE-SINGLE THROW.
	FUSE.
	FUSE.
	FUSED SWITCH.
	FUSED SWITCH.
	RELAY, NORMALLY OPEN.

REFERENCE SYMBOLS

	DESCRIPTION
	REFERENCE NOTE.
	SPECIFIC NOTE REFERENCE.
	CALL OUT REFERENCE.
	REVISION REFERENCE.
	DETAIL REFERENCE: "A" DENOTES DETAIL "E1" DENOTES SHEET NUMBER WHERE DETAIL IS TAKEN "E2" DENOTES SHEET NUMBER WHERE DETAIL IS DRAWN

GENERAL NOTES:

- ALL ELECTRICAL EQUIPMENT AND THE RESULTANT INSTALLATION OF SUCH EQUIPMENT, DEVICES, ETC., SHALL BE IN STRICT COMPLIANCE WITH THE 2020 NATIONAL ELECTRIC CODE (NFPA 70), LIFE SAFETY CODE (NFPA 101), 2021 NATIONAL ELECTRICAL SAFETY CODE (NFPA 70E), AND ALL APPLICABLE STATE AND FEDERAL CODES.
- CONTRACTOR SHALL TAKE RESPONSIBILITY FOR FIELD VERIFICATION OF ALL DIMENSIONS AND LOCATIONS OF EQUIPMENT, AND SHALL BE RESPONSIBLE FOR COORDINATION WITH THE WORK OF OTHER TRADES NECESSARY TO THE PROJECT.
- THESE DRAWINGS ARE INTENDED TO OUTLINE THE SCOPE OF WORK REQUIRED TO PROVIDE A COMPLETE AND OPERABLE PROJECT CONCLUSION. ALL MISCELLANEOUS COMPONENTS, PARTS, FASTENERS, SPLICES, AND OTHER INCIDENTAL ITEMS NECESSARY TO PROVIDE A COMPLETED PROJECT SHALL BE PROVIDED WHETHER OR NOT SPECIFICALLY NOTED.
- CONTRACTOR SHALL NOTIFY OWNER IMMEDIATELY OF ANY CONFLICTS ARISING FROM DISCOVERED CONDITIONS AT ANY PHASE OF THE PROJECT.
- CONTRACTOR SHALL KEEP A CURRENT SET OF AS-INSTALLED DRAWINGS DOCUMENTING FIELD MODIFICATIONS, CHANGES, EXACT SUBSURFACE UTILITY ROUTINGS, ETC. TO BE TURNED OVER TO OWNER UPON PROJECT COMPLETION.
- CONTRACTOR SHALL PROVIDE ALL NECESSARY PARTS AND LABOR TO INSTALL ELECTRICAL EQUIPMENT.
- ALL ELECTRICAL EQUIPMENT SUCH AS SWITCHBOARDS, PANELBOARDS, CONTROL PANELS, DISCONNECTS, ETC. SHALL BE LABELED TO IDENTIFY POTENTIAL ELECTRIC ARC FLASH HAZARDS IN COMPLIANCE WITH THE REQUIREMENTS OF NFPA 70E-2021 "STANDARD FOR ELECTRICAL SAFETY IN THE WORKPLACE" AND ANSI Z535.4-1998 "PRODUCT SAFETY SIGNS AND LABELS".
- INSTALL RGS EXPANSION FITTINGS ON ALL RACEWAYS RISING FROM EARTH TO PILE SUPPORTED STRUCTURES
- ALL STRUT, ANCHORS, AND HARDWARE SHALL BE 316 GRADE STAINLESS STEEL.

E1.0

SHEET NUMBER

PH

BY

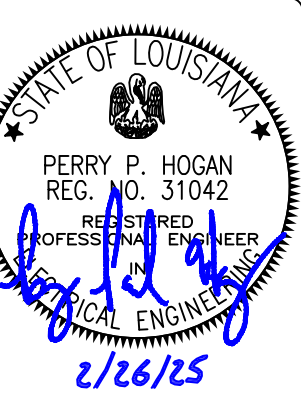
ISSUE FOR BIDS

REVISION DESCRIPTION

02/26/2025

DATE

NO.



BKJ BURK-KLEINPETER, INC.
ENGINEERING PLANNING ENVIRONMENTAL

DESIGNED PH PH
CHECKED PH PH

DATE SHEET
February 2025 1 OF 1

CLIENT PROJECT NO.: BK1 # : 9344-8680

CITY OF GREINA
BURMASTER TRANSFER FACILITY

ELECTRICAL SYMBOLS & NOTES



LUMINAIRE SCHEDULE

TAG	NOTES	DESCRIPTION	CATALOG	VOLTAGE	LAMP
F1	1,2	LED FLOODLIGHT, WIDE DISTRIBUTION, TWISTLOCK PHOTOCELL, SL4 OPTICS, 45° VERTICAL TILT	COOPER STREETWORKS GAN-SA9 SERIES	208	60,000 LUMENS 4000K
F2		LED SURFACE CANOPY	COOPER LUMARK CLCS SERIES	UNV	8000 LUMENS 4000K

LUMINAIRE SCHEDULE NOTES

- UL LISTED AND APPROVED FOR WET LOCATIONS.
- 30' HOT-DIPPED GALVANIZED STEEL ROUND TAPERED POLE. 11 GA. MINIMUM THICKNESS, 11" BOLT CIRCLE, 1"x40" GALV. ANCHOR BOLTS, WITH 150 MPH WIND LOAD RATING. UNITED LIGHTING STANDARDS OR EQUAL.

2/24/2025

CKT 30		NEMA 3R		SYM RMS AMPS 22000																		
MAIN		SYSTEM VOLTAGE		MOUNTINGSURFACE																		
MCB 200		120/208 3ph, 4wire		LOCATIONRACK MNT.																		
SCHEDULE OF PANEL																						
PP1																						
CIR NO.	CIRCUIT DESCRIPTION	C/B TRIPPOLE	KVA	PHASES			KVA	POLE	C/B TRIP	CIRCUIT DESCRIPTION	CIR NO.											
				A	B	C																
1	SITE LIGHTING	20	2	1.56	4.78	4.78	8.00	2	60	PP2	2											
3											4											
5											6											
7	SITE LIGHTING	20	2	1.04	2.60	2.60	6.24	3	50	TRASH COMPACTOR	8											
9											10											
11	OIL RECEIVING BLDG. LTS	20	1	0.11	2.60	2.19	1.50	1.50	1	20	RACK RECEPTACLE	12										
13												14										
15												16										
17												18										
19												20										
21												22										
23												24										
25												26										
27												28										
29												30										
												7.38	6.97	4.10								
TOTAL KVA CONNECTED :												18.45		KVA								

ABBREVIATIONS

A	AMPERE(S)	E	EMERGENCY	J	JUNCTION BOX	O	ON CENTER	S	SINGLE POINT CONNECTION
AC	ALTERNATING CURRENT	E.C.	EMPTY CONDUIT	KB	EMPTY CONDUIT	OL	OVERLOAD CONTACT	SS	STAINLESS STEEL
A/C	AIR CONDITIONING	EF	EXHAUST FAN	K		OT	OVERTEMP CONTACT	SUPVR	SUPERVISORY
AF	AMPERE FRAME	EL	ELEVATION	KCMIL	THOUSAND CIRCULAR MILS			SWBD	SWITCHBOARD
AFF	ABOVE FINISHED FLOOR	EM	EMERGENCY	KVA	KILOVOLT.AMPERES	P	POLE		
AFG	ABOVE FINISHED GRADE	EP	EXPLOSION PROOF	KW	KILOWATT	Ø	PHASE	TB	TERMINAL BLOCK
AI	ANALOG INPUT	ESD	EMERGENCY SHUTDOWN			PLC	PROGRAMMABLE LOGIC CONTROLLER	TELE	TELEPHONE
AIC	AMPERES INTERRUPTING CAPACITY	EW	EYE WASH STATION	L				TR	TIMING RELAY
ALUM	ALUMINUM	EWB	ELECTRIC WATER HEATER	LCP	LOCAL CONTROL PANEL	PNL	PANEL	TYP	TYPICAL
AO	ANALOG OUTPUT	EXIST	EXISTING	LS	LEVEL SENSOR	PR	PAIR		
AT	AMPERE TRIP			LV	LOW VOLTAGE	PRI	PRIMARY	UG	UNDERGROUND
AWG	AMERICAN WIRE GAGE					PT	POTENTIAL TRANSFORMER	U.L.	UNDERWRITER'S LABORATORIES
		F		MCB	MAIN CIRCUIT BREAKER	PVC	POLYVINYL CHLORIDE	UNO	UNLESS NOTED OTHERWISE
		FA	FAILSAFE ACTUATOR	MCC	MOTOR CONTROL CENTER	PWR	POWER		
		FF	FINISHED FLOOR	MH	METAL HALIDE	R	RUN CONTACTOR		
		FLA	FULL LOAD AMPS	MISC	MISCELLANEOUS	REC	RECEPTACLE	V	VOLTS
		FLUOR	FLUORESCENT	MLO	MAIN LUGS ONLY	REQ'D.	REQUIRED	VAC	VOLTAGE, ALTERNATING CURRENT
		FS	FLOAT SWITCH	MT	MULTI-TAP	RGS	RIGID GALVANIZED STEEL	VDC	VOLTAGE, DIRECT CURRENT
		FT.	FOOT; FEET	MTD	MOUNTED	RM	ROOM		
B		GALV	GALVANIZED	MTS	MANUAL TRANSFER SWITCH	RT	RAINTIGHT		
BKBD	BACKBOARD	GFI	GROUND FAULT INTERRUPTER	MH	MOUNTING HEIGHT	RTD	RESISTIVE TEMPERATURE DETECTOR	W	WATTS, WIRE, WIDTH
								WP	WEATHERPROOF
		G		NEC	NATIONAL ELECTRICAL CODE	S		X	TRANSFORMER
		HMI	HUMAN INTERFACE	N.C.	NORMALLY CLOSED	SC	SCREEN CLEANERS		
		HOA	HAND/OFF/AUTO	N.O.	NORMALLY OPEN	SEC	SECONDARY	XFMR	
		HP	HORSEPOWER	N.O.	NORMALLY OPEN	SF	SUPPLY FAN		
		HV	HIGH VOLTAGE	NIC	NOT IN CONTRACT	SHT.	SHEET		
		HZ	HERTZ	NF	NONFUSED	SMK	SMOKE		
				NL	NIGHT LIGHT				
		INCAND	INCANDESCENT	NTS	NOT TO SCALE				

ELECTRICAL SCHEDULES & ABBREVIATIONS

E2.0

SHEET NUMBER

PH

BY

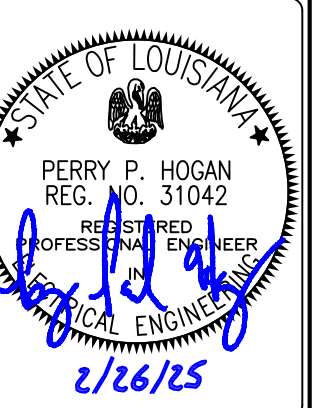
ISSUE FOR BIDS

REVISION DESCRIPTION

02/26/2025

DATE

NO.



BKJ BURK-KLEINPETER, INC.
 ENGINEERING PLANNING ENVIRONMENTAL
 BKJUSA.COM

DESIGNED PH CHECKED PH
 DETAILED PH CHECKED PH
 DATE SHEET 1 OF 1
 February 2025
 CLIENT PROJECT NO.: BKJ # : 9344-9660

CITY OF GREINA
 BURMASTER TRANSFER FACILITY

ELECTRICAL SCHEDULES & ABBREVIATIONS



2/24/2025

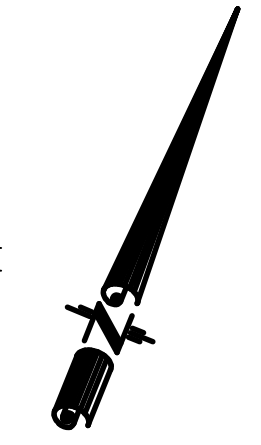
E3.0
SHEET NUMBER

E3.0 GENERAL NOTES:

1. NEW UNDERGROUND ELECTRIC SERVICE AND POLES TO BE FURNISHED AND INSTALLED BY ENTERGY.
2. CONTRACTOR TO COORDINATE AND SCHEDULE ENTERGY SERVICE INSTALLATION WITH CONSTRUCTION SCHEDULE.

E3.0 SPECIFIC NOTES:

- 1 EXISTING 3-PHASE UTILITY POLE.
- 2 APPROXIMATE LOCATION OF ELECTRIC SERVICE RACK WITH UTILITY METER AND PANELBOARD PP1. REFER TO SHEET E2.0 FOR PP1 PANEL SCHEDULE.
- 3 APPROXIMATE LOCATION OF COMPACTOR DISCONNECT SWITCH. COMPACTOR IS WASTEQUIP MODEL 245IP, 10 HP, 208V, 3Ø. CONTRACTOR SHALL FURNISH AND INSTALL A 60A, 3Ø, NEMA 4X 316 SS FUSED DISCONNECT WITH 40AF. INSTALL 3#8 + #8 GND, 1" TO PP1.
- 4 ENTRY GUARD SHACK IS FURNISHED WITH A 208/120V, 60A, 1Ø LOAD CENTER. CONTRACTOR TO INSTALL A NEMA 4X JUNCTION BOX ON STAINLESS STEEL SUPPORT ADJACENT TO GUARD SHACK POWER ENTRY LOCATION. INSTALL LFMC FROM GUARD SHACK TO NEMA 4X JUNCTION BOX.
- 5 INSTALL 2#8 + #10 GND, 1-1/4" FOR BRANCH LIGHTING CIRCUIT. INSTALL #10 CONDUCTOR FROM BASE OF POLE TO LUMINAIRE.
- 6 INSTALL 2#10 + #10 GND, 1" FOR BRANCH LIGHTING CIRCUIT.
- 7 INSTALL ST01 7 DAY PROGRAMMABLE DIGITAL TIMER SWITCH, HEAVY DUTY, 120V, BY INTERMATIC OR EQUAL. INSTALL IN SURFACE MOUNTED SINGLE GANG FD BACKBOX WITH WET WILE IN USE CAST ALUMINUM COVER PLATE.
- 8 REFER TO SHEET E4.0 FOR CIRCUIT REQUIREMENTS.
- 9 CONTRACTOR TO COORDINATE WITH ENTERGY FOR THE INSTALLATION OF A ENTERGY POLE MOUNTED FLOODLIGHT TO ILLUMINATE SITE ENTRANCE. UTILITY CHARGED SHALL BE BILLED TO CITY OF GRETNA BILLING ACCOUNT.



APPARENT P/L

LEGEND

- (W) REQ'D WATER SERVICE
- (E) REQ'D ELECTRICAL SERVICE
- REQ'D CATCH BASIN
- X REQ'D CHAIN-LINK FENCE
- (LP) REQ'D LIGHT POLE
- ➔ PLASTIC PAVEMENT LEGEND AND SYMBOLS (ARROW STRAIGHT)
- ➔ REQ'D DRAIN PIPE
- ▨ REQ'D CONCRETE PAVEMENT
- ▨ REQ'D ASPHALT PAVEMENT
- ▨ REQ'D REMOVAL
- ▨ REQ'D PAVEMENT PATCH

WASTE WATER TREATMENT PLANT

APPARENT P/L

REQ'D DETENTION BASIN

COMPACTOR (BY OTHERS)

GUARD STATION

ROLLER GATE

F2 F2

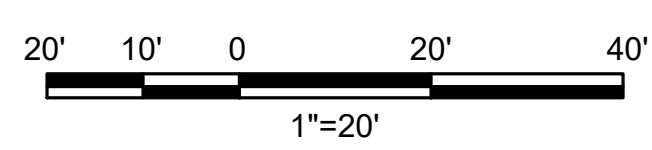
TIRES

OIL RECEIVING BLDG.

ROLLER GATE

APPARENT R/W

BURMASTER ST.



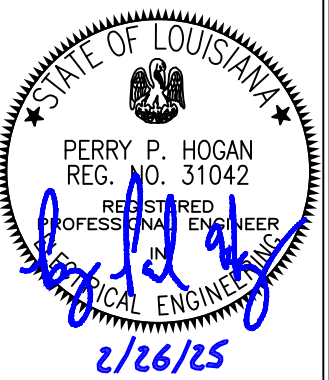
ELECTRICAL SITE PLAN
SCALE: 1" = 20'

BKJ BURK-KLEINPETER, INC.
ENGINEERING PLANNING ENVIRONMENTAL
BKIUSA.COM

DESIGNED	PH	PH	DATE	February 2025
CHECKED	PH	PH	SHEET	1 OF 1

CLIENT PROJECT NO.: BK1 # : 9344-8680

CITY OF GRETNA
BURMASTER TRANSFER FACILITY
ELECTRICAL SITE PLAN



NO.	DATE	REVISION DESCRIPTION

