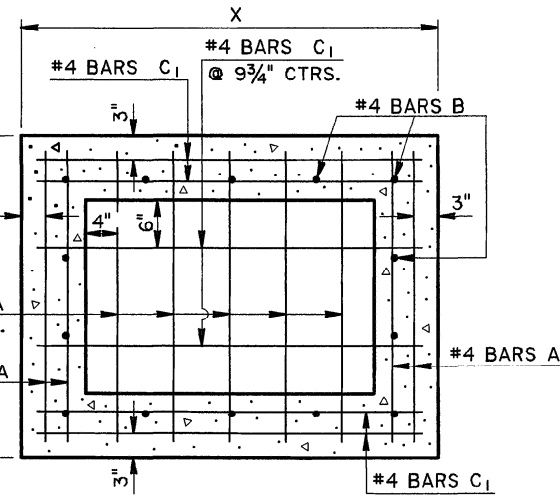


PLAN

\* GRATE TO BE TYPE "B" OR "C"  
TYPE "B" SHOWN.

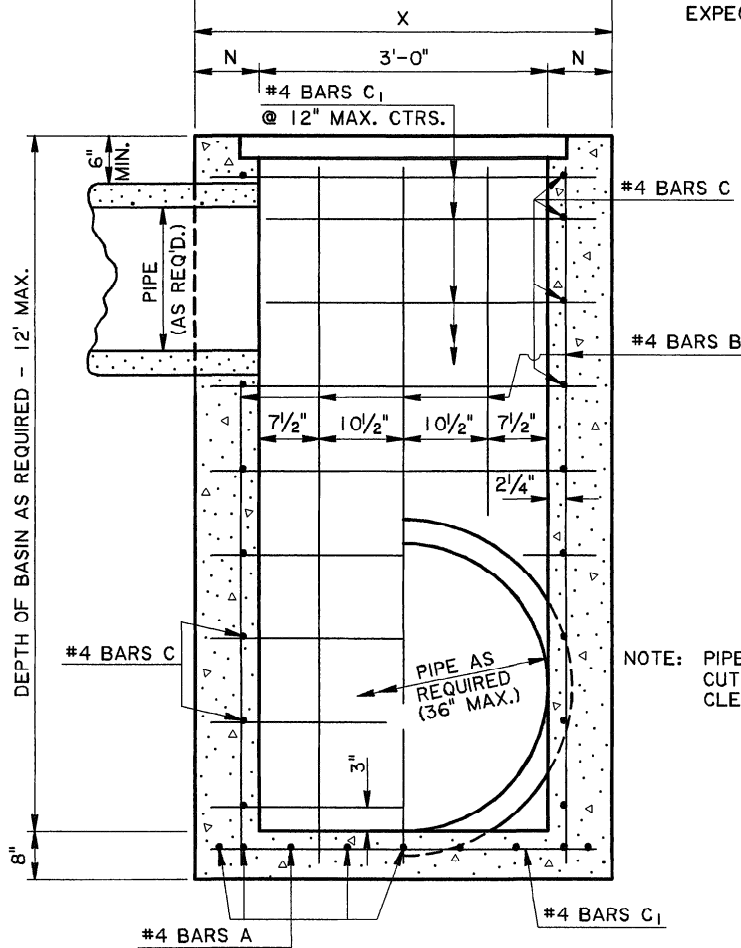


HORIZONTAL SECTION

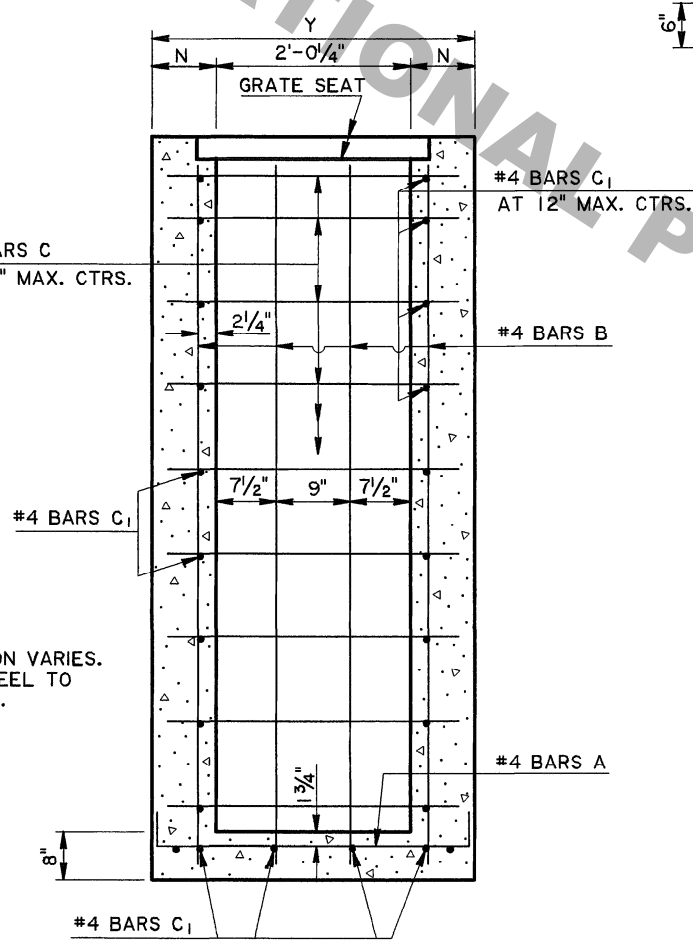
SHOWING BOTTOM SLAB REINFORCING STEEL

NOTE: TYPE "B" GRATE TO BE USED  
WHERE NO PEDESTRIAN TRAFFIC  
IS EXPECTED.

TYPE "C" GRATE TO BE USED  
WHERE PEDESTRIAN TRAFFIC IS  
EXPECTED.



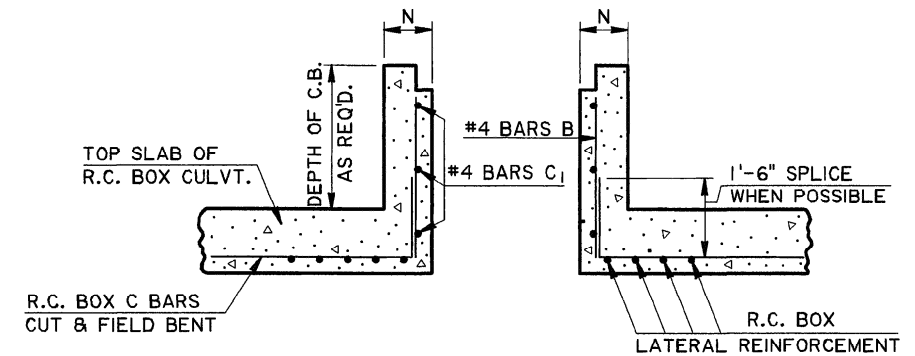
SECTION A-A



SECTION B-B

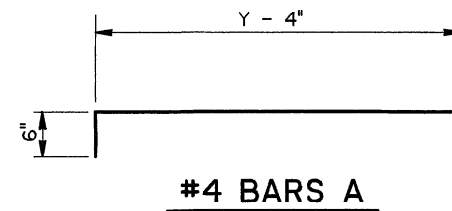
NOTE: PIPE SIZE & LOCATION VARIES.  
CUT REINFORCING STEEL TO  
CLEAR, AS REQUIRED.

DIMENSIONS			
DEPTH OF BASIN	N	X	Y
FT.	IN.	FT.- IN.	FT.- IN.
0 - 8	7	4-2	3-2 1/4
8.1 - 12	8	4-4	3-4 1/4

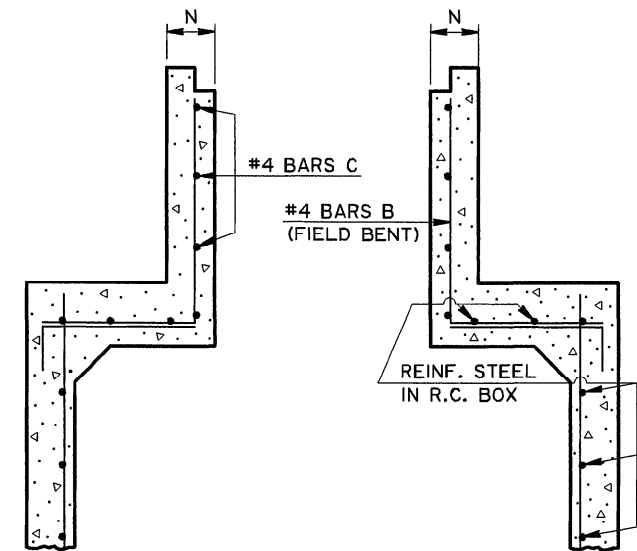


LONGITUDINAL SECTION

SHOWING CATCH BASIN  
USED WITH R.C. BOX CULVERT.



#4 BARS A



TRANSVERSE SECTION

SHOWING CATCH BASIN  
USED WITH R.C. BOX CULVERT.

GENERAL NOTES:

SECTION 702 OF THE CURRENT DOTD STANDARD  
SPECIFICATIONS SHALL APPLY.

DIMENSIONS RELATING TO REINFORCING STEEL ARE  
TO BAR CENTERS.

VERTICAL REINFORCING STEEL MAY BE SPLICED. SPLICE  
LENGTH IS 35 DIAMETERS.

FOR DETAILS OF GRATE AND SEAT, SEE STD. PLAN MC-01  
(TYPE B OR C).

SEE PLANS FOR TYPE OF GRATE TO BE USED FOR  
EACH CATCH BASIN.

SHEET NUMBER	PARISH	FEDERAL PROJECT	STATE PROJECT
DESIGNED BY	PAW	CHECKED BY	KAJ
DATE	1-31-97	REVISION DESCRIPTION	OF 1
APPROVED BY	REDA	REVISION DESCRIPTION	DATE: 11-2-08
CHIEF ENGINEER		REVISION DESCRIPTION	
11-2-00	Converted Metric CB-01M to English CB-01	REVISION DESCRIPTION	
DATE		REVISION DESCRIPTION	
APPROVED BY		REVISION DESCRIPTION	
CHIEF ENGINEER		REVISION DESCRIPTION	
CONCRETE OPEN TOP CATCH BASIN	Max. Pipe: 36" x 24"	Max. Depth: 12'	Plan MC-01
To Be Used In Conjunction With Std. Plan MC-01			
STANDARD PLAN	CB-01		
HYDRAULICS SECTION			