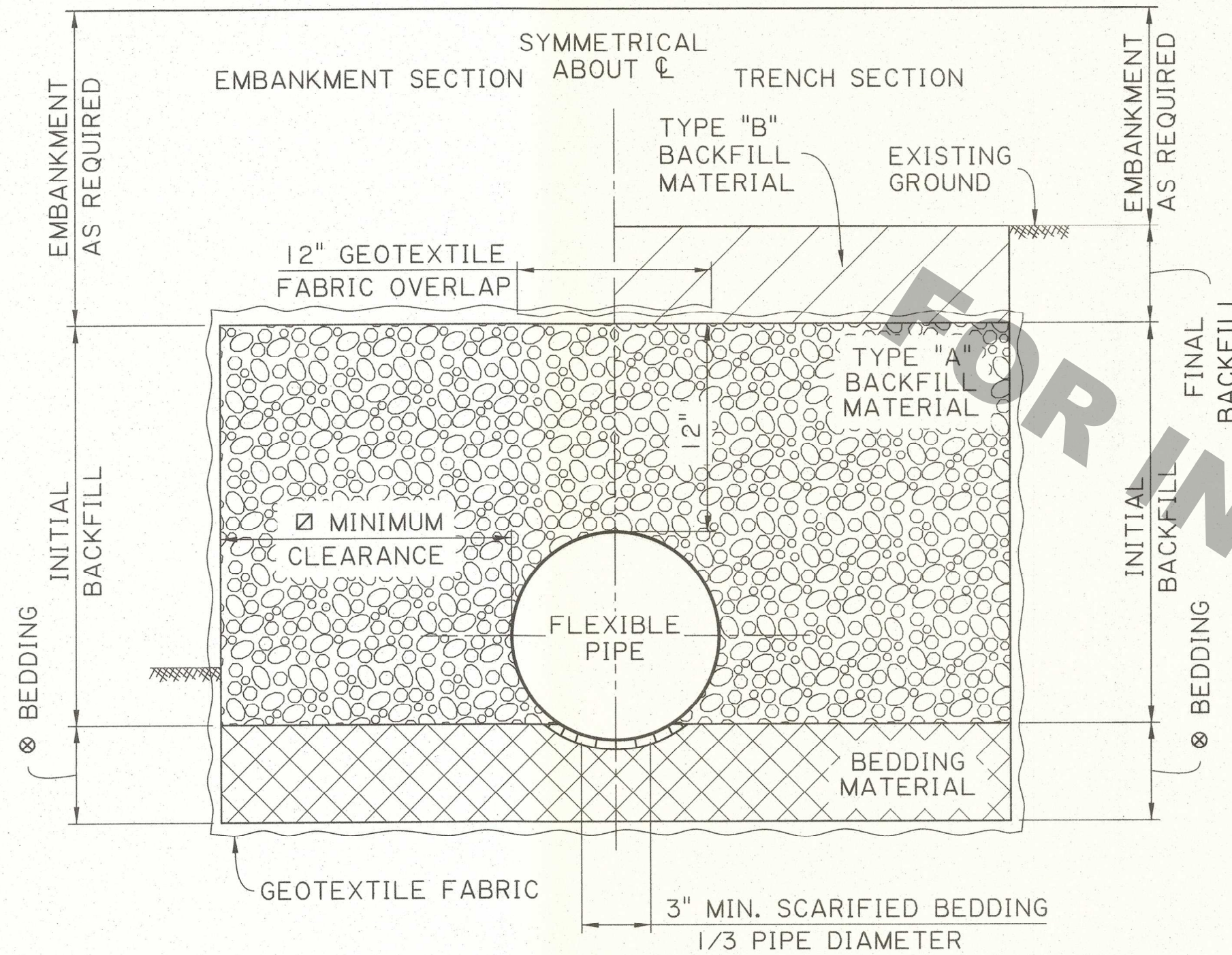


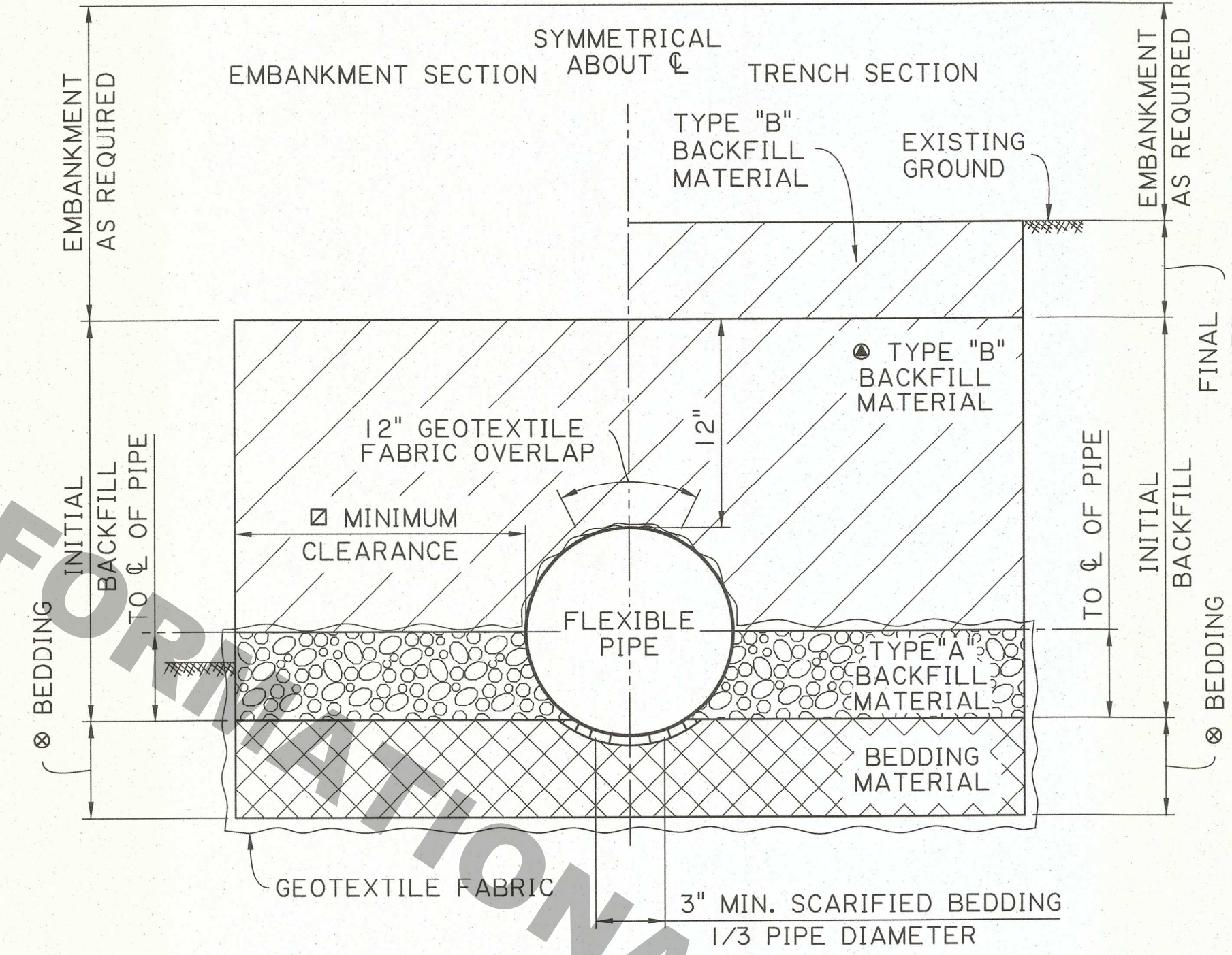


MINIMUM TRENCH CLEARANCE		
TYPE OF STRUCTURE	INSIDE DIAMETER	MIN. CLEARANCE
REINFORCED CONCRETE	ALL	18"
FLEXIBLE PIPE	<48"	18"
FLEXIBLE PIPE	≥48"	24"

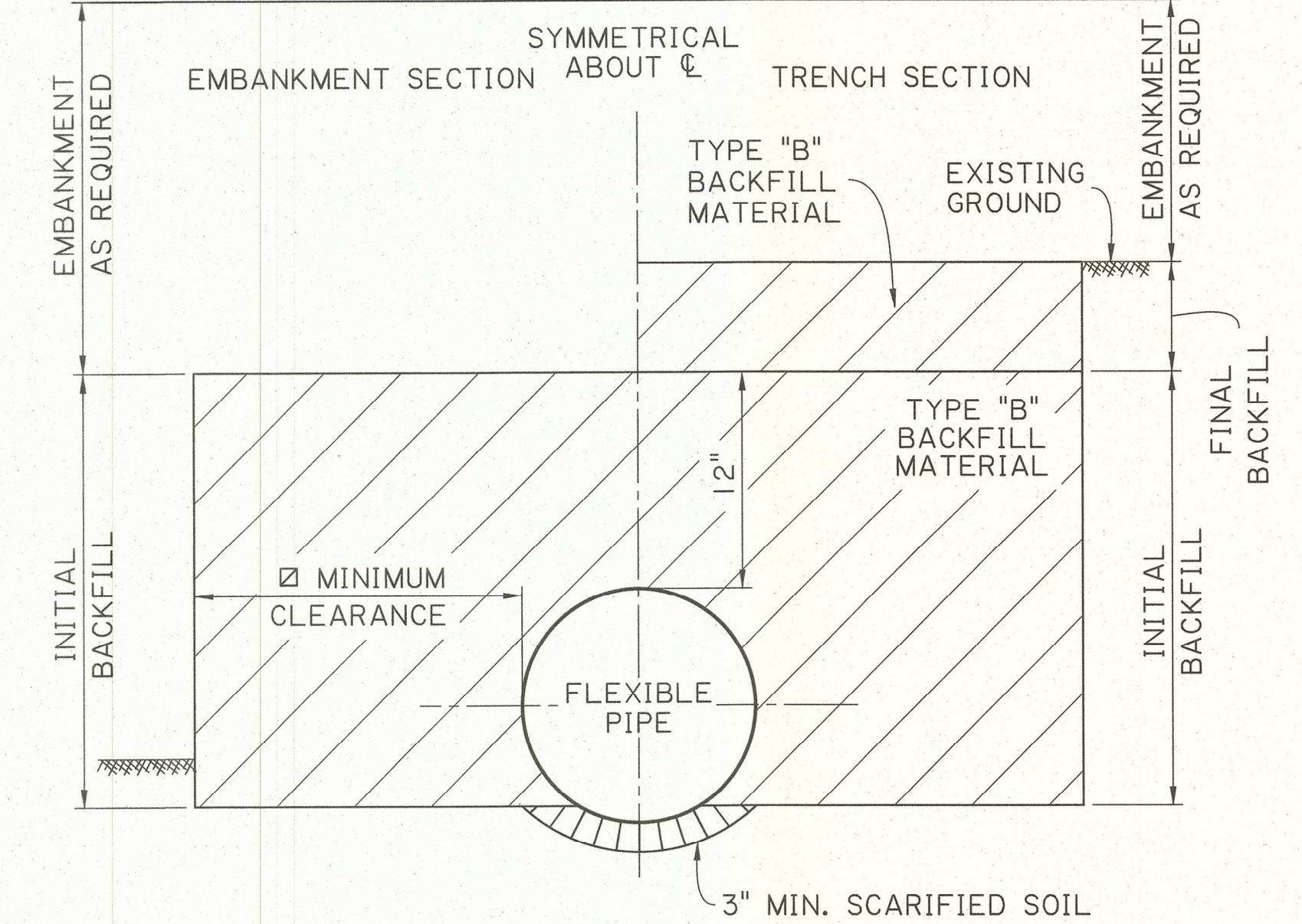
- ⊗ MINIMUM BEDDING MATERIAL THICKNESS UNDER STRUCTURE IS 6 INCHES UNLESS OTHERWISE SHOWN ON PLANS OR AS DIRECTED BY THE PE.
- △ NO BEDDING MATERIAL REQUIRED UNLESS OTHERWISE SPECIFIED ON THE PLANS OR AS DIRECTED BY THE PE.
- REFER TO NOTE 3 ON SHEET 1 OF THIS SERIES.



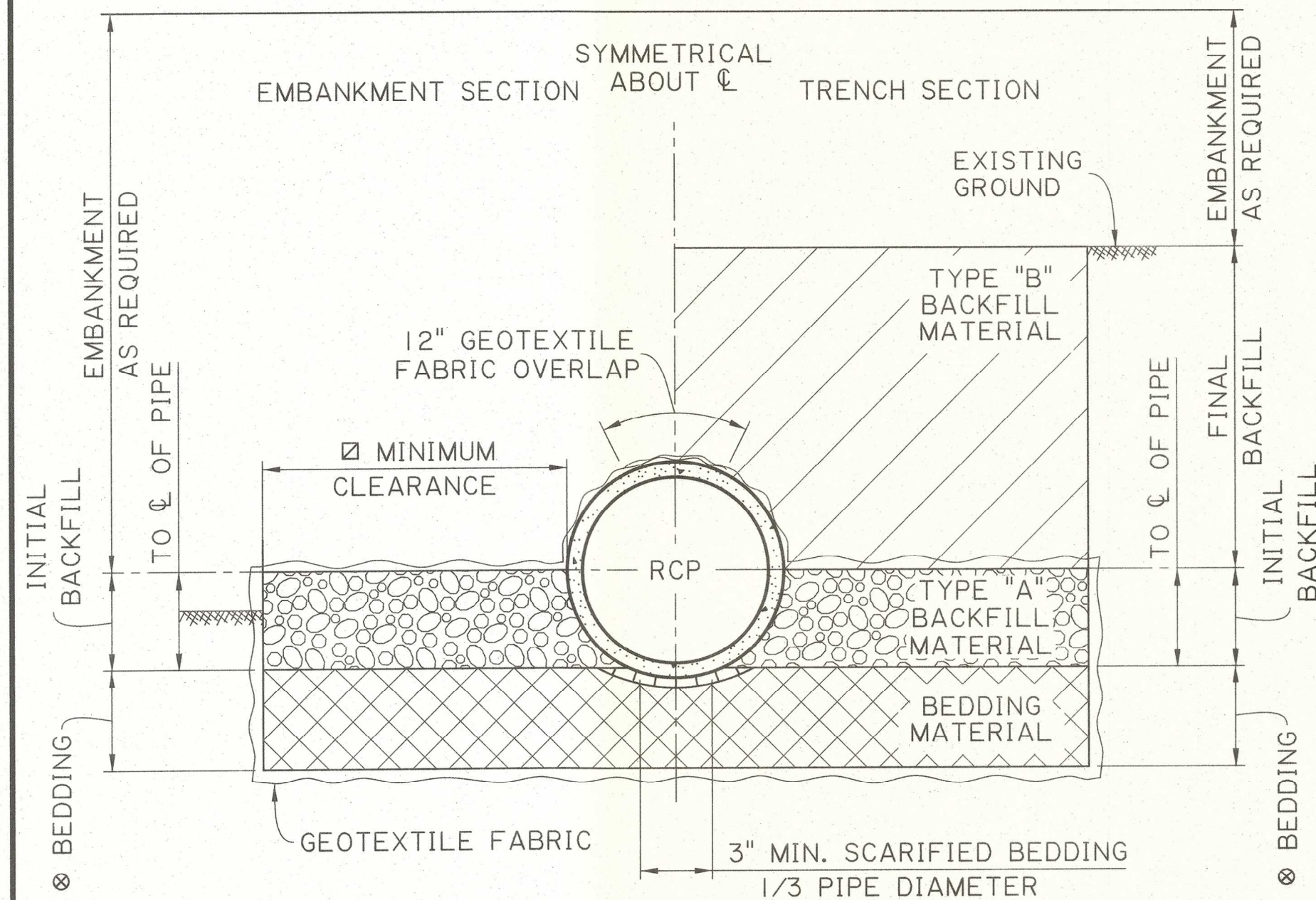
**FLEXIBLE PIPE CROSS DRAIN**  
TRENCH AND EMBANKMENT INSTALLATIONS  
SCALE: 1/2"=1'-0"



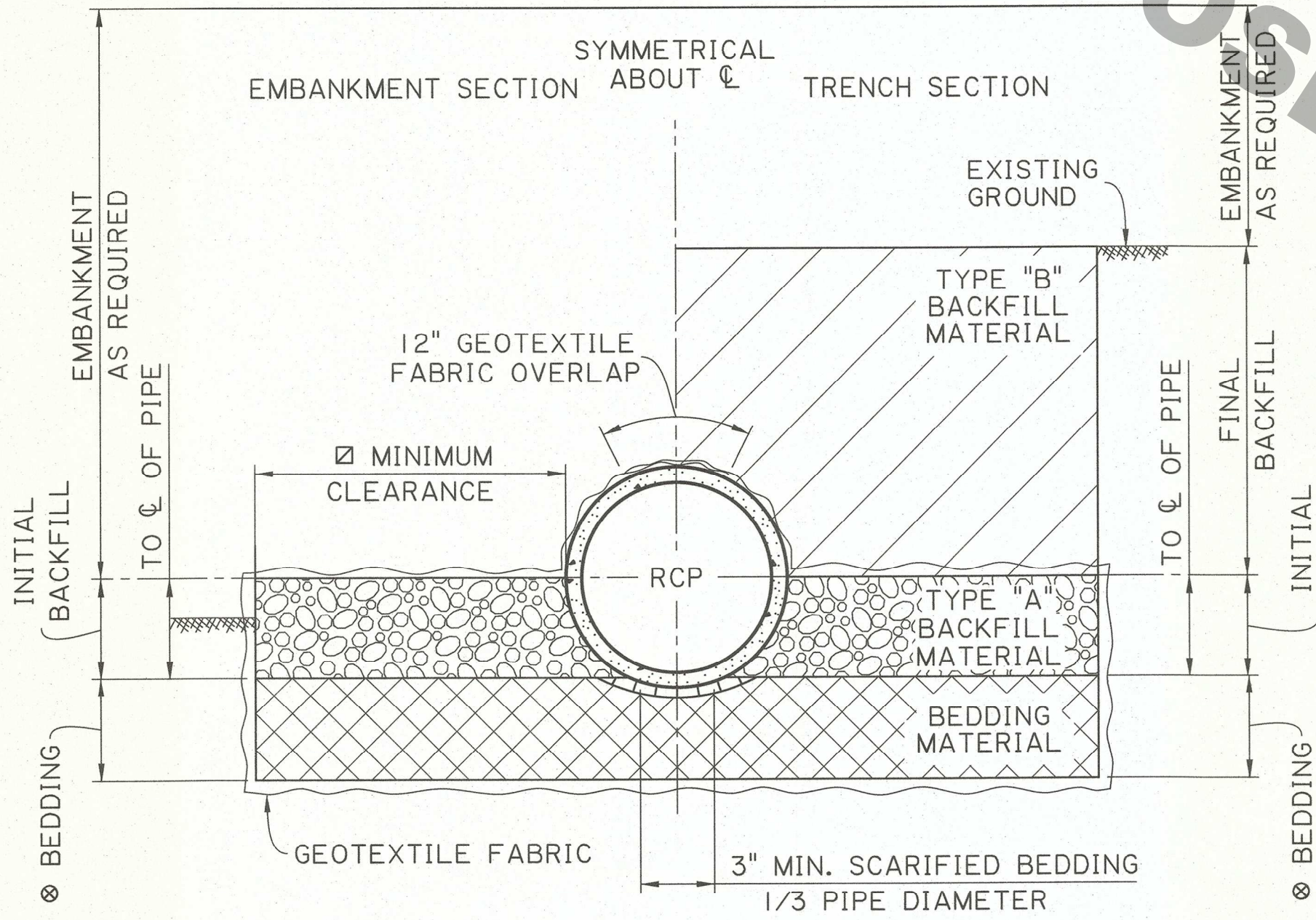
**FLEXIBLE PIPE STORM DRAIN**  
TRENCH AND EMBANKMENT INSTALLATIONS  
SCALE: 1/2"=1'-0"



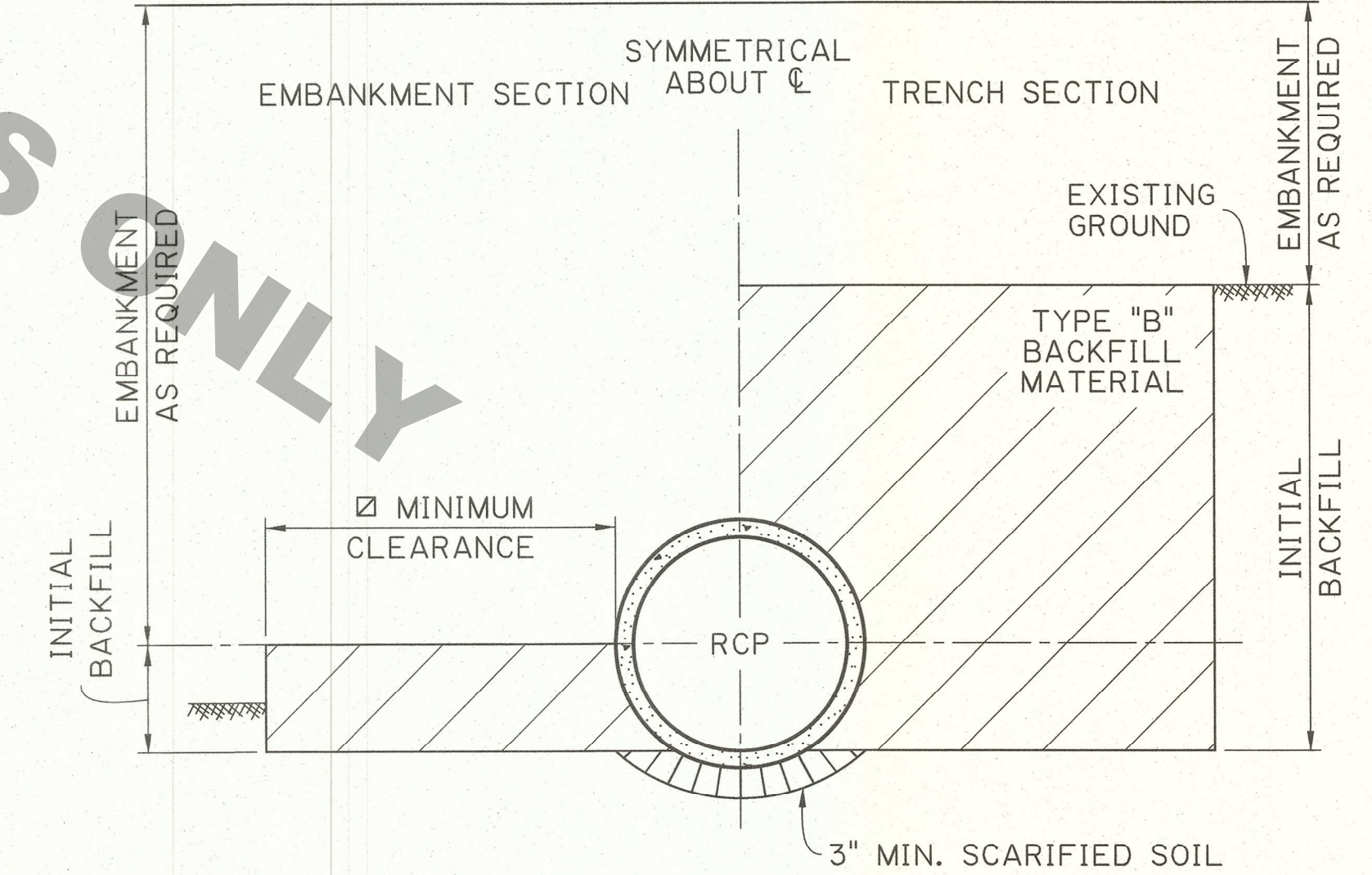
**△ FLEXIBLE PIPE SIDE DRAIN**  
TRENCH AND EMBANKMENT INSTALLATIONS  
SCALE: 1/2"=1'-0"



**REINFORCED CONCRETE PIPE CROSS DRAIN**  
TRENCH AND EMBANKMENT INSTALLATIONS  
SCALE: 1/2"=1'-0"



**REINFORCED CONCRETE PIPE STORM DRAIN**  
TRENCH AND EMBANKMENT INSTALLATIONS  
SCALE: 1/2"=1'-0"

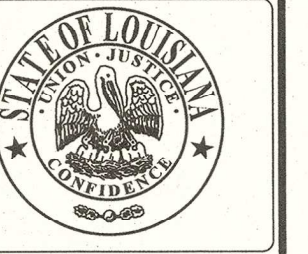


**△ REINFORCED CONCRETE PIPE SIDE DRAIN**  
TRENCH AND EMBANKMENT INSTALLATIONS  
SCALE: 1/2"=1'-0"

SHEET NUMBER		PARISH		CONTROL SECTION		STATE PROJECT	
DESIGN	C. NICKEL	CHECK	J. RAUSER	DETAIL	L. HASTINGS	CHECK	A. NICKEL
REVIEW	C. NICKEL	SERIES	# 2 OF 2				

APPROVED BY CHIEF ENGINEER: *Christopher J. Nickel* DATE: 10/26/2023

STATE OF LOUISIANA  
CHRISTOPHER J. NICKEL  
License No. 3357  
PROFESSIONAL ENGINEER  
IN  
CIVIL ENGINEERING  
10/23/2023



DRAINAGE STRUCTURES  
TYPICAL SECTIONS FOR CROSS  
DRAINS & SIDE DRAINS  
STANDARD PLAN BM-01

