

FLOOD INSURANCE STUDY  
JEFFERSON PARISH, LOUISIANA

**GRETNA**

APPENDIX

PREPARED FOR  
FEDERAL INSURANCE ADMINISTRATION  
BY  
NEW ORLEANS DISTRICT, CORPS OF ENGINEERS  
NEW ORLEANS, LOUISIANA

AFRIL 1971

1. AUTHORITY FOR STUDY

The preparation of the study, subject "Flood Insurance Study, Jefferson Parish, Louisiana," was authorized by OCE letter dated 4 June 1970. An OCE letter dated 31 August 1970, subject "Flood Insurance Study, Kenner, Gretna, Westwego and Hazahan, Louisiana" authorized the additional study of all the incorporated areas in the parish, excluding Grand Isle, in conjunction with the aforementioned study.

2. FINANCING OF STUDY

In accordance with Project Order No. 21 of the Inter-Agency Agreement (IAA) H-8-70 and Project Order No. 2 of the Inter-Agency Agreement (IAA) H-8-71, funds have been fully obligated by the Department of Housing and Urban Development to cover Corps of Engineers expenditures.

3. GENERAL

The incorporated area of Gretna, Louisiana lies within Jefferson Parish on the east bank of the Mississippi River. Plates 1 through 4 are maps describing the area included within this study. Procedures and methodology used in the determination of average annual flood damage, damage less deductible, and actuarial rates as related to various types of structures and contents in Gretna are the same as for those described in the "Flood Insurance Study, Jefferson Parish, Louisiana - Unincorporated Areas" dated April 1971. Tabulations of these rates (General Rate Tables) are presented on Exhibits 1 through 8. Exhibit 9 contains tabulations of the actuarial rates for various floor elevations as related to



EXHIBIT 1  
 FLOOD INSURANCE STUDY  
 JEFFERSON PARISH, LOUISIANA  
 UNINCORPORATED  
 AND

GRETNA, LA.

GENERAL RATE TABLE

REACH 6

STRUCTURE - CLASSES IN S INP

1ST FLOOR IN FEET FROM 100-YEAR FLOOD	AVERAGE ANNUAL RATES IN \$ PER \$100 VALUE		
	FLOOD DAMAGE	DAMAGE LESS DEDUCTIBLE	ACTUARIAL
-1.5	5.56	4.56	14.50
-1.4	4.93	4.02	12.90
-1.3	4.33	3.46	11.20
-1.2	3.72	2.92	9.56
-1.1	3.17	2.43	8.13
-1.0	2.67	1.98	6.61
-0.9	2.15	1.53	5.11
-0.8	1.63	1.06	3.53
-0.7	1.10	0.60	2.02
-0.6	0.63	0.32	1.07
-0.5	0.34	0.21	0.72
-0.4	0.23	0.15	0.51
-0.3	0.16	0.12	0.39
-0.2	0.12	0.09	0.31
-0.1	0.10	0.08	0.26
0.0	0.08	0.07	0.22
0.1	0.07	0.06	0.19
0.2	0.06	0.05	0.16
0.3	0.05	0.04	0.14
0.4	0.05	0.04	0.12
0.5	0.04	0.03	0.10
0.6	0.03	0.03	0.09
0.7	0.03	0.02	0.07
0.8	0.02	0.02	0.06
0.9	0.02	0.01	0.05
1.0	0.01	0.01	0.05
1.1	0.01	0.01	0.05
1.2	0.01	0.00	0.05
1.3	0.00	0.00	0.05
1.4	0.00	0.00	0.05

1. AUTHORITY FOR STUDY

The preparation of the study, subject "Flood Insurance Study, Jefferson Parish, Louisiana," was authorized by OCE letter dated 4 June 1970. An OCE letter dated 31 August 1970, subject "Flood Insurance Study, Kenner, Gretna, Westwego and Harahan, Louisiana" authorized the additional study of all the incorporated areas in the parish, excluding Grand Isle, in conjunction with the aforementioned study.

2. FINANCING OF STUDY

In accordance with Project Order No. 21 of the Inter-Agency Agreement (IAA) H-8-70 and Project Order No. 2 of the Inter-Agency Agreement (IAA) H-8-71, funds have been fully obligated by the Department of Housing and Urban Development to cover Corps of Engineers expenditures.

3. GENERAL

The incorporated area of Gretna, Louisiana lies within Jefferson Parish on the east bank of the Mississippi River. Plates 1 through 4 are maps describing the area included within this study. Procedures and methodology used in the determination of average annual flood damage, damage less deductible, and actuarial rates as related to various types of structures and contents in Gretna are the same as for those described in the "Flood Insurance Study, Jefferson Parish, Louisiana - Unincorporated Areas" dated April 1971. Tabulations of these rates (General Rate Tables) are presented on Exhibits 1 through 8. Exhibit 9 contains tabulations of the actuarial rates for various floor elevations as related to



the base flood reference line, the average actuarial rates, and the class designations. Exhibit 10 contains the results of sampling surveys conducted in the area. The elevation-frequency curve representing flood conditions in the area is presented on Plate 5 whereas Plates 6 through 13 show the depth-percent damage relationships used in the rate determinations.

EXHIBIT 1  
 FLOOD INSURANCE STUDY  
 JEFFERSON PARISH, LOUISIANA  
 UNINCORPORATED  
 AND

GRETNA, LA.

GENERAL RATE TABLE

REACH 6

STRUCTURE - CLASSES IN & JNP

1ST FLOOR IN FEET FROM 100-YEAR FLOOD	AVERAGE ANNUAL RATES IN \$ PER \$100 VALUE		
	FLOOD DAMAGE	DAMAGE LESS DEDUCTIBLE	ACTUARIAL
-1.5	5.56	4.56	14.50
-1.4	4.93	4.02	12.90
-1.3	4.33	3.46	11.20
-1.2	3.72	2.92	9.56
-1.1	3.17	2.43	8.13
-1.0	2.67	1.98	6.61
-.9	2.15	1.53	5.11
-.8	1.63	1.06	3.53
-.7	1.10	0.60	2.02
-.6	0.63	0.32	1.07
-.5	0.34	0.21	0.72
-.4	0.23	0.15	0.51
-.3	0.16	0.12	0.39
-.2	0.12	0.09	0.31
-.1	0.10	0.08	0.26
0.0	0.08	0.07	0.22
0.1	0.07	0.06	0.19
0.2	0.06	0.05	0.16
0.3	0.05	0.04	0.14
0.4	0.05	0.04	0.12
0.5	0.04	0.03	0.10
0.6	0.03	0.03	0.09
0.7	0.03	0.02	0.07
0.8	0.02	0.02	0.06
0.9	0.02	0.01	0.05
1.0	0.01	0.01	0.05
1.1	0.01	0.01	0.05
1.2	0.01	0.00	0.05
1.3	0.00	0.00	0.05
1.4	0.00	0.00	0.05



EXHIBIT 2  
 FLOOD INSURANCE STUDY  
 JEFFERSON PARISH, LOUISIANA  
 UNINCORPORATED  
 AND

GRETNA, LA.

GENERAL RATE TABLE

REACH 6

STRUCTURE - CLASSES 2N & 2NP

1ST FLOOR IN FEET FROM 100-YEAR FLOOD	AVERAGE ANNUAL RATES IN \$ PER \$100 VALUE		
	FLOOD DAMAGE	DAMAGE LESS DEDUCTIBLE	ACTUARIAL
-1.5	3.87	2.87	9.41
-1.4	3.47	2.56	8.39
-1.3	3.09	2.22	7.43
-1.2	2.70	1.90	6.34
-1.1	2.32	1.58	5.27
-1.0	1.96	1.27	4.24
-.9	1.60	0.98	3.27
-.8	1.26	0.69	2.31
-.7	0.90	0.40	1.35
-.6	0.52	0.21	0.69
-.5	0.26	0.14	0.46
-.4	0.17	0.10	0.33
-.3	0.12	0.07	0.25
-.2	0.09	0.06	0.20
-.1	0.07	0.05	0.16
0.0	0.06	0.04	0.14
0.1	0.05	0.04	0.12
0.2	0.04	0.03	0.10
0.3	0.04	0.03	0.09
0.4	0.03	0.02	0.08
0.5	0.03	0.02	0.07
0.6	0.02	0.02	0.06
0.7	0.02	0.02	0.05
0.8	0.02	0.02	0.05
0.9	0.01	0.02	0.05
1.0	0.01	0.02	0.05
1.1	0.01	0.00	0.05
1.2	0.01	0.00	0.05
1.3	0.00	0.00	0.05
1.4	0.00	0.00	0.05

EXHIBIT 3  
 FLOOD INSURANCE STUDY  
 JEFFERSON PARISH, LOUISIANA  
 UNINCORPORATED  
 AND

GREYNA, LA.

GENERAL RATE TABLE

REACH 6

STRUCTURE - CLASS 3N

1ST FLOOR IN FEET FROM 100-YEAR FLOOD	AVERAGE ANNUAL RATES IN \$ PER \$100 VALUE		
	FLOOD DAMAGE	DAMAGE LESS DEDUCTIBLE	ACTUARIAL
-1.5	3.03	2.04	6.81
-1.4	2.69	1.79	5.93
-1.3	2.40	1.54	5.14
-1.2	2.08	1.29	4.30
-1.1	1.75	1.03	3.44
-1.0	1.46	0.78	2.61
-0.9	1.19	0.57	1.91
-0.8	0.96	0.39	1.32
-0.7	0.71	0.24	0.79
-0.6	0.42	0.13	0.43
-0.5	0.21	0.09	0.30
-0.4	0.14	0.07	0.22
-0.3	0.10	0.05	0.17
-0.2	0.07	0.04	0.14
-0.1	0.05	0.03	0.11
0.0	0.05	0.03	0.10
0.1	0.04	0.03	0.08
0.2	0.03	0.02	0.07
0.3	0.03	0.02	0.06
0.4	0.03	0.02	0.05
0.5	0.02	0.01	0.05
0.6	0.02	0.01	0.05
0.7	0.02	0.01	0.05
0.8	0.01	0.01	0.05
0.9	0.01	0.01	0.05
1.0	0.01	0.00	0.05
1.1	0.01	0.00	0.05
1.2	0.00	0.00	0.05
1.3	0.00	0.00	0.05
1.4	0.00	0.00	0.05



EXHIBIT 4  
 FLOOD INSURANCE STUDY  
 JEFFERSON PARISH, LOUISIANA  
 UNINCORPORATED  
 AND

GRETNA, LA.

GENERAL RATE TABLE

REACH 6

STRUCTURE - CLASS 4

1ST FLOOR IN FEET FROM 100-YEAR FLOOD	AVERAGE ANNUAL RATES IN \$ PER \$100 VALUE		
	FLOOD DAMAGE	DAMAGE LESS DEDUCTIBLE	ACTUARIAL
-1.5	29.79	28.79	88.67
-1.4	26.93	26.02	80.14
-1.3	24.08	23.21	71.50
-1.2	20.85	20.05	61.77
-1.1	17.20	16.46	50.70
-1.0	13.32	12.63	38.89
-.9	9.59	8.97	27.63
-.8	6.47	5.90	18.41
-.7	4.23	3.73	12.08
-.6	2.56	2.25	7.51
-.5	1.45	1.32	4.41
-.4	1.00	0.93	3.10
-.3	0.75	0.70	2.33
-.2	0.58	0.55	1.84
-.1	0.48	0.45	1.53
0.0	0.41	0.39	1.31
0.1	0.36	0.34	1.14
0.2	0.31	0.30	1.01
0.3	0.28	0.27	0.89
0.4	0.25	0.24	0.79
0.5	0.22	0.21	0.70
0.6	0.19	0.18	0.60
0.7	0.16	0.15	0.51
0.8	0.13	0.12	0.41
0.9	0.09	0.09	0.29
1.0	0.06	0.06	0.19
1.1	0.04	0.03	0.11
1.2	0.02	0.01	0.05
1.3	0.01	0.01	0.05
1.4	0.00	0.00	0.05

EXHIBIT 5  
 FLOOD INSURANCE STUDY  
 JEFFERSON PARISH, LOUISIANA  
 UNINCORPORATED  
 AND

GREYNA, LA.

GENERAL RATE TABLE

REACH 6

CONTENTS - CLASSES F, FP & M

1ST FLOOR IN FEET FROM 100-YEAR FLOOD	AVERAGE ANNUAL RATES IN \$ PER \$100 VALUE		
	FLOOD DAMAGE	DAMAGE LESS DEDUCTIBLE	ACTUARIAL
-1.5	12.60	11.60	35.74
-1.4	10.92	10.01	30.85
-1.3	9.34	8.48	26.10
-1.2	7.83	7.03	21.66
-1.1	6.42	5.68	17.73
-1.0	5.08	4.39	13.97
-.9	3.91	3.29	10.64
-.8	2.94	2.37	7.91
-.7	2.01	1.51	5.05
-.6	1.17	0.86	2.86
-.5	0.67	0.55	1.83
-.4	0.47	0.40	1.33
-.3	0.35	0.30	1.02
-.2	0.28	0.24	0.82
-.1	0.23	0.20	0.68
0.0	0.19	0.17	0.57
0.1	0.16	0.15	0.49
0.2	0.14	0.13	0.42
0.3	0.12	0.11	0.36
0.4	0.10	0.09	0.31
0.5	0.08	0.08	0.25
0.6	0.07	0.06	0.21
0.7	0.06	0.05	0.17
0.8	0.05	0.04	0.13
0.9	0.03	0.03	0.10
1.0	0.02	0.02	0.10
1.1	0.02	0.01	0.10
1.2	0.01	0.01	0.10
1.3	0.00	0.00	0.10
1.4	0.00	0.00	0.10



EXHIBIT 6  
 FLOOD INSURANCE STUDY  
 JEFFERSON PARISH, LOUISIANA  
 UNINCORPORATED  
 AND

GRETNA, LA.

GENERAL RATE TABLE

REACH 6

CONTENTS - CLASSES FS & FSP

1ST FLOOR IN FEET FROM 100-YEAR FLOOD	AVERAGE ANNUAL RATES IN \$ PER \$100 VALUE		
	FLOOD DAMAGE	DAMAGE LESS DEDUCTIBLE	ACTUARIAL
-1.5	6.47	5.49	17.14
-1.4	5.71	4.82	15.31
-1.3	5.03	4.17	13.27
-1.2	4.34	3.56	11.55
-1.1	3.66	2.93	9.51
-1.0	2.97	2.29	7.66
-.9	2.31	1.70	5.68
-.8	1.70	1.15	3.84
-.7	1.12	0.66	2.22
-.6	0.63	0.35	1.21
-.5	0.36	0.25	0.82
-.4	0.25	0.18	0.60
-.3	0.18	0.14	0.46
-.2	0.14	0.11	0.37
-.1	0.11	0.09	0.31
0.0	0.10	0.08	0.27
0.1	0.08	0.07	0.23
0.2	0.07	0.06	0.20
0.3	0.06	0.05	0.17
0.4	0.05	0.04	0.15
0.5	0.05	0.04	0.12
0.6	0.04	0.03	0.10
0.7	0.03	0.03	0.10
0.8	0.03	0.02	0.10
0.9	0.02	0.02	0.10
1.0	0.02	0.01	0.10
1.1	0.01	0.01	0.10
1.2	0.01	0.00	0.10
1.3	0.00	0.00	0.10
1.4	0.00	0.00	0.10

EXHIBIT 7  
 FLOOD INSURANCE STUDY  
 JEFFERSON PARISH, LOUISIANA  
 UNINCORPORATED  
 AND

GRETNA, LA.

GENERAL RATE TABLE

REACH 6

CONTENTS - CLASSES S AND SP

1ST FLOOR IN FEET FROM 100-YEAR FLOOD	AVERAGE ANNUAL RATES IN \$ PER \$100 VALUE		
	FLOOD DAMAGE	DAMAGE LESS DEDUCTIBLE	ACTUARIAL
-1.5	0.58	0.11	0.37
-1.4	0.77	0.06	0.21
-1.3	0.67	0.04	0.13
-1.2	0.58	0.03	0.10
-1.1	0.47	0.02	0.10
-1.0	0.37	0.02	0.10
-0.9	0.29	0.01	0.10
-0.8	0.22	0.01	0.10
-0.7	0.15	0.01	0.10
-0.6	0.09	0.01	0.10
-0.5	0.05	0.01	0.10
-0.4	0.03	0.01	0.10
-0.3	0.03	0.01	0.10
-0.2	0.02	0.00	0.10
-0.1	0.02	0.00	0.10
0.0	0.01	0.00	0.10
0.1	0.01	0.00	0.10
0.2	0.01	0.00	0.10
0.3	0.01	0.00	0.10
0.4	0.01	0.00	0.10
0.5	0.01	0.00	0.10
0.6	0.01	0.00	0.10
0.7	0.00	0.00	0.10
0.8	0.00	0.00	0.10
0.9	0.00	0.00	0.10
1.0	0.00	0.00	0.10
1.1	0.00	0.00	0.10
1.2	0.00	0.00	0.10
1.3	0.00	0.00	0.10
1.4	0.00	0.00	0.10



EXHIBIT 8  
FLOOD INSURANCE STUDY  
JEFFERSON PARISH, LOUISIANA  
UNINCORPORATED  
AND

GRETNA, LA.

GENERAL RATE TABLE

REACH 6

CONTENTS - CLASS T

1ST FLOOR IN FEET FROM 100-YEAR FLOOD	AVERAGE ANNUAL RATES IN \$ PER \$100 VALUE		
	FLOOD DAMAGE	DAMAGE LESS DEDUCTIBLE	ACTUARIAL
-1.5	3.47	2.35	8.35
-1.4	3.00	2.14	7.14
-1.3	2.56	1.75	5.86
-1.2	2.14	1.40	4.67
-1.1	1.77	1.08	3.61
-1.0	1.44	0.81	2.70
-.9	1.11	0.55	1.82
-.8	0.79	0.31	1.05
-.7	0.50	0.18	0.61
-.6	0.29	0.13	0.43
-.5	0.18	0.10	0.32
-.4	0.13	0.07	0.25
-.3	0.09	0.06	0.20
-.2	0.07	0.05	0.17
-.1	0.06	0.04	0.14
0.0	0.05	0.04	0.12
0.1	0.04	0.03	0.11
0.2	0.04	0.03	0.10
0.3	0.03	0.02	0.10
0.4	0.03	0.02	0.10
0.5	0.02	0.02	0.10
0.6	0.02	0.01	0.10
0.7	0.02	0.01	0.10
0.8	0.01	0.01	0.10
0.9	0.01	0.00	0.10
1.0	0.01	0.00	0.10
1.1	0.00	0.00	0.10
1.2	0.00	0.00	0.10
1.3	0.00	0.00	0.10
1.4	0.00	0.00	0.10

EXHIBIT 9  
 FLOOD INSURANCE STUDY  
 JEFFERSON PARISH, LOUISIANA

GREYNA, LA.  
 ELEVATION SAMPLING SURVEY

ZONE A-6

1ST FLOOR IN FT. RELATIVE TO BASE FLOOD	NO. OF RESI- DENCES	CLASSES	
		1N	2N
-1.0	22	20	2
-0.5	15	13	2
0.0	35	28	7
+0.5	29	26	3
+1.0	24	24	-
TOTALS	125	111	14



EXHIBIT 10  
 FLOOD INSURANCE STUDY  
 JEFFERSON PARISH, LOUISIANA  
 GRETNA, LA.

ACTUARIAL RATE TABLES  
 (RATES FOR \$ PER \$100 VALUE)

BEACH 6

Elevation - Actuarial Rates

Class*	STRUCTURE						
	First Floor Level, Feet Above or Below Base Flood						
	ABOVE				BELOW		
	1.5	1.0	0.5	0.0	0.5	1.0	1.5
1N and 1NP	0.05	0.05	0.10	0.22	0.71	6.11	4.56
2N and 2NP	0.05	0.05	0.07	0.14	0.46	4.16	3.11
3N	0.05	0.05	0.05	0.10	0.30	2.61	6.01
4	0.05	0.19	0.70	1.31	4.41	1.87	6.16

CONTENTS

Class*	First Floor Level, Feet Above or Below Base Flood						
	ABOVE						
	1.5	1.0	0.5	0.0	0.5	1.0	1.5
F, FP and M	0.10	0.10	0.25	0.57	1.83	13.97	35.74
S and SP	0.10	0.10	0.10	0.10	0.10	0.10	0.37
FS and FSP	0.10	0.10	0.12	0.27	0.82	7.66	17.14
T	0.10	0.10	0.10	0.12	0.32	2.70	8.33

Average Actuarial Rates

Class*	Zone A6	Zone B6	Zone C6
STRUCTURE			
1N	1.36	0.05	0.05
2N	0.76	0.05	0.05
CONTENTS			
F	2.86	0.10	3.10
S	0.10	0.10	0.10
FS	1.21	0.10	0.10

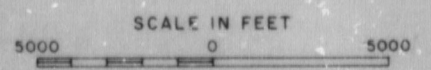
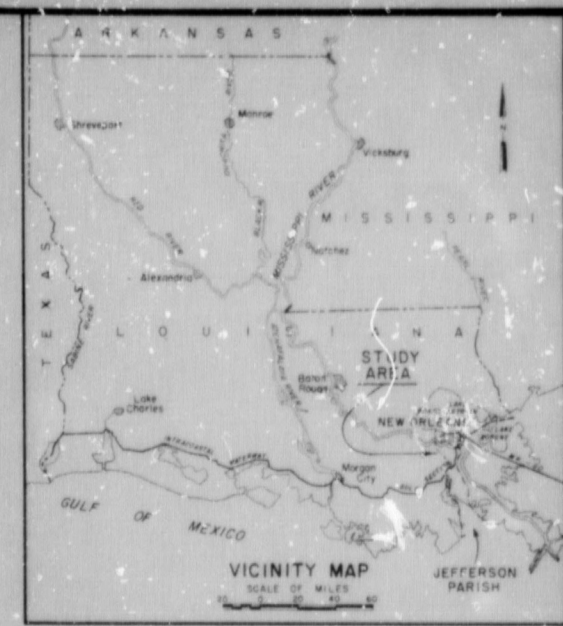
*Class Designation	Description
1N	Structure - 1 story, no basement, on slab
1NP	" - 1 story, no basement, on piers
2N	" - 2 stories, no basement, on slab
2NP	" - 2 stories, no basement, on piers
3N	" - Split Level
4	" - Mobile home on foundation
F	Contents - All on first floor, on slab
FP	" - All on first floor, on piers
S	" - All on second floor, on slab
SP	" - All on second floor, on piers
FS	" - On first and second floors, on slab
FSP	" - On first and second floors, on piers
T	" - All levels of split level residences
M	" - Mobile home on foundation

EXHIBIT 11  
FLOOD INSURANCE STUDY  
JEFFERSON PARISH, LOUISIANA  
GRETNA, LA.  
ELEVATION-FREQUENCY DATA  
REACH 6

<u>YEARS</u>	<u>ELEVATION IN FT. M.S.L.</u>
5	-2.3
10	-2.1
25	-2.0
50	-1.8
100	-1.6
250	-1.1
500	-0.5



8B Study Contractor Draft FIS Profiles



FLOOD INSURANCE STUDY  
JEFFERSON PARISH, LOUISIANA  
**GRETNA, LOUISIANA**

**INDEX MAP**

U.S. ARMY ENGINEER DISTRICT, NEW ORLEANS  
CORPS OF ENGINEERS

APRIL 1971

FILE NO. H-2-25645

PLATE I





ORLEANS PARISH  
JEFFERSON PARISH

MISSISSIPPI RIVER

ZONE C6

GREтна

MATCH PLATE 3



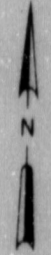
INDEX TO PLATES

LEGEND

- LIMIT OF ZONES
- CORPORATE LIMITS
- PARISH BOUNDRY

NOTE: This map prepared for the Federal Insurance Administration by the New Orleans District Corps of Engineers, New Orleans

SCALE IN FEET



FLOOD INSURANCE STUDY  
JEFFERSON PARISH, LOUISIANA  
GREтна, LOUISIANA  
**FLOOD INSURANCE STUDY MAP**  
SHEET 1 OF 3

U.S. ARMY ENGINEER DISTRICT, NEW ORLEANS  
CORPS OF ENGINEERS

FILE NO. H-2-25645

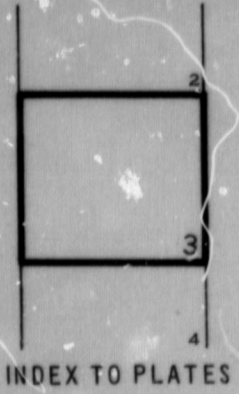
PLATE 2



MATCH PLATE 2



MATCH PLATE 4

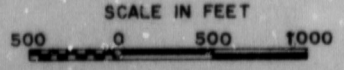


LEGEND.

- LIMIT OF ZONES
- CORPORATE LIMITS
- - - PARISH BOUNDRY

Base Flood Elev. A6 is - 1.6 feet M.S.L.

NOTE This map prepared for the Federal insurance Administration by the New Orleans District Corps of Engineers, New Orleans



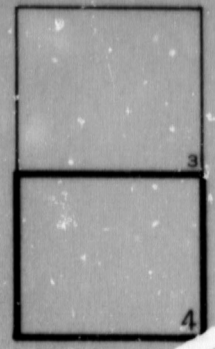
FLOOD INSURANCE STUDY  
 JEFFERSON PARISH, LOUISIANA  
 GRETNA, LOUISIANA  
**FLOOD INSURANCE STUDY MAP**  
 SHEET 2 OF 3

U.S. ARMY ENGINEER DISTRICT, NEW ORLEANS  
 CORPS OF ENGINEERS  
 APRIL 1971 FILE NO H-2-23645

PLATE 3



MATCH PLATE 3



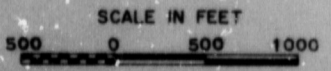
INDEX TO PLATES

LEGEND

- LIMIT OF ZONES
- CORPORATE LIMITS
- PARISH BOUNDARY

Flood Elev. A6 is -1.6 feet M.S.L.

NOTE: This map prepared for the Federal Insurance Administration by the New Orleans District Corps of Engineers, New Orleans.

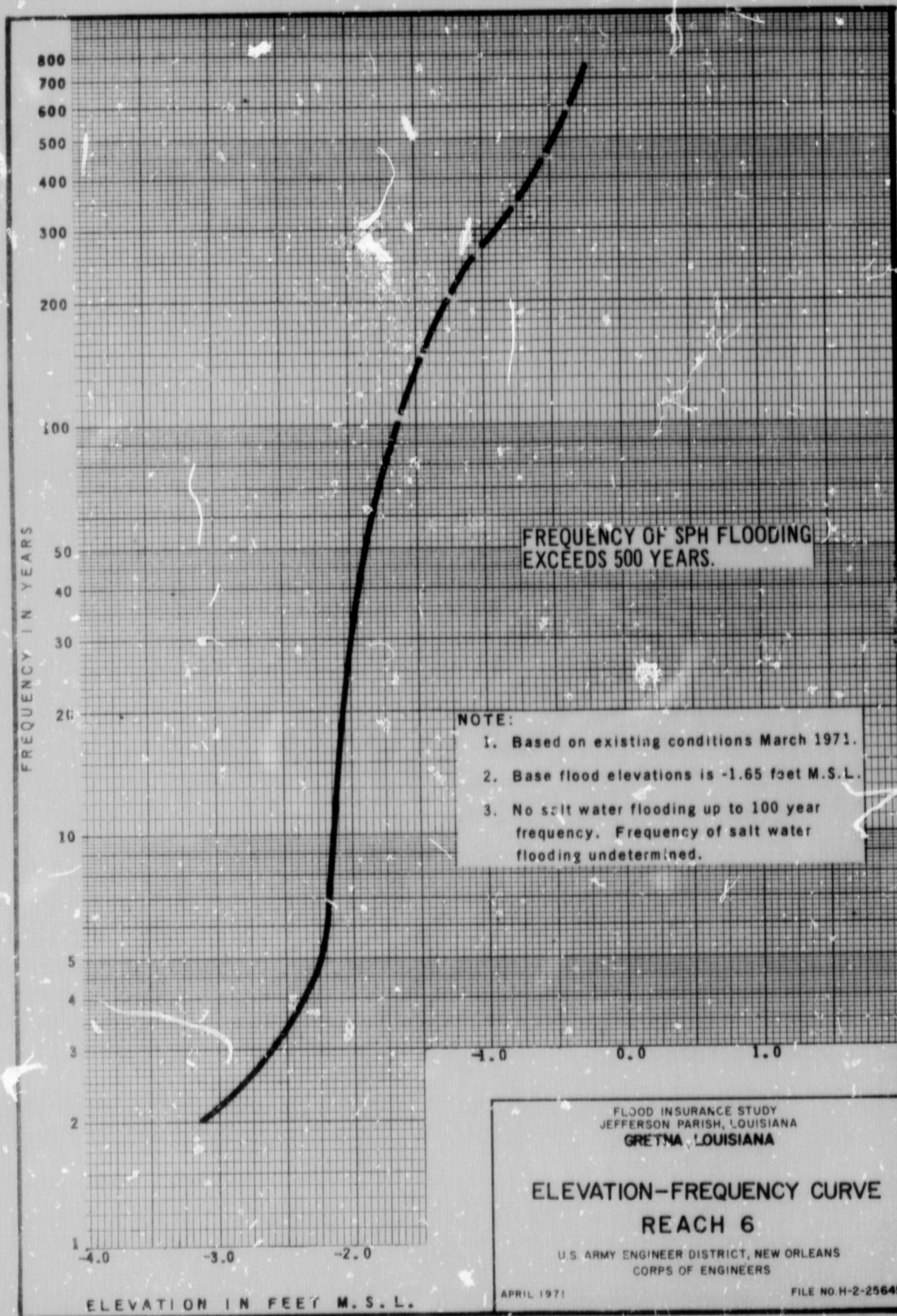


FLOOD INSURANCE STUDY  
JEFFERSON PARISH, LOUISIANA  
GREYNA, LOUISIANA  
**FLOOD INSURANCE STUDY MAP**  
SHEET 3 OF 3

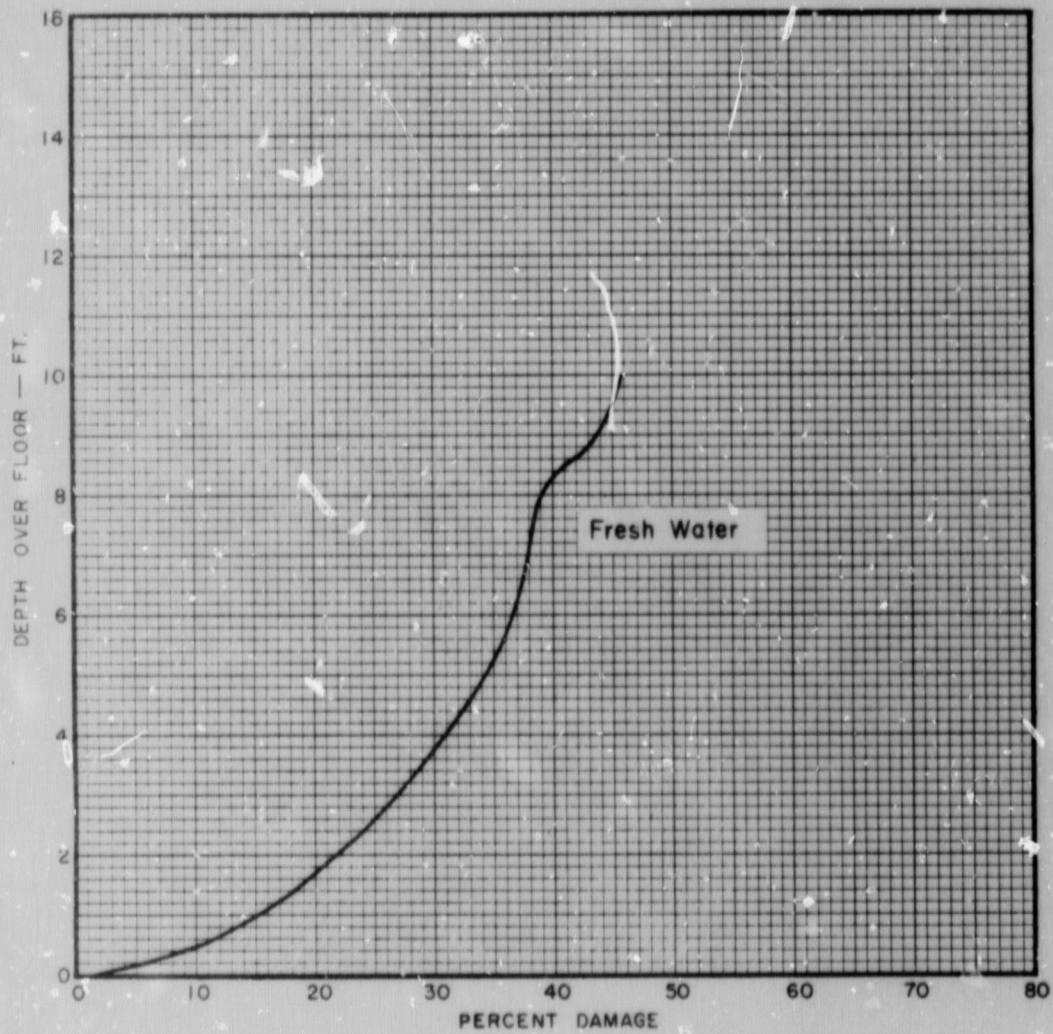
U.S. ARMY ENGINEER DISTRICT, NEW ORLEANS  
CORPS OF ENGINEERS  
APRIL 1971 FILE NO H-2-25045

PLATE 4









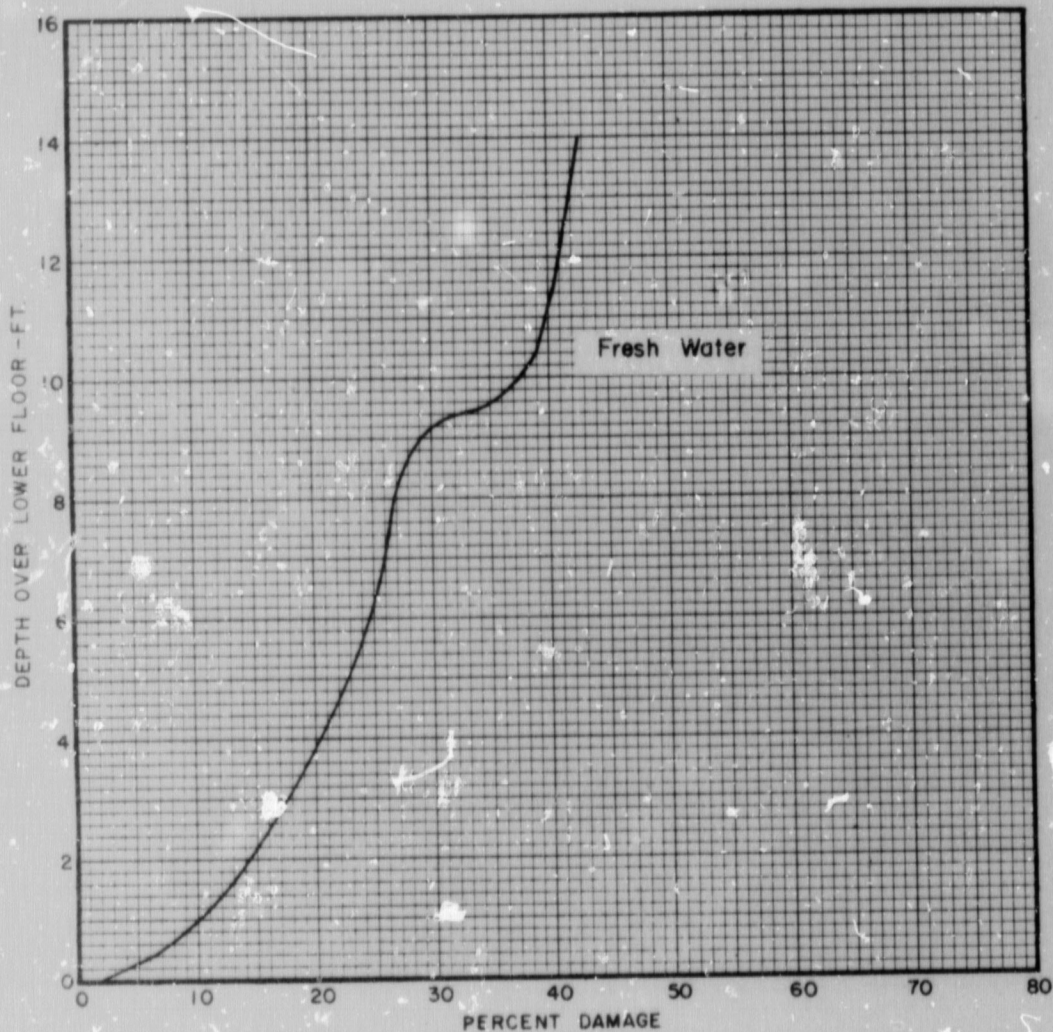
FLOOD INSURANCE STUDY  
JEFFERSON PARISH, LOUISIANA  
GRETHA, LOUISIANA  
DEPTH - PERCENT DAMAGE CURVE  
STRUCTURE  
ONE STORY-NO BASEMENT  
(IN&INP)

U.S. ARMY ENGINEER DISTRICT, NEW ORLEANS  
CORPS OF ENGINEERS

APRIL 1971

FILE NO H-2-25645

PLATE 6



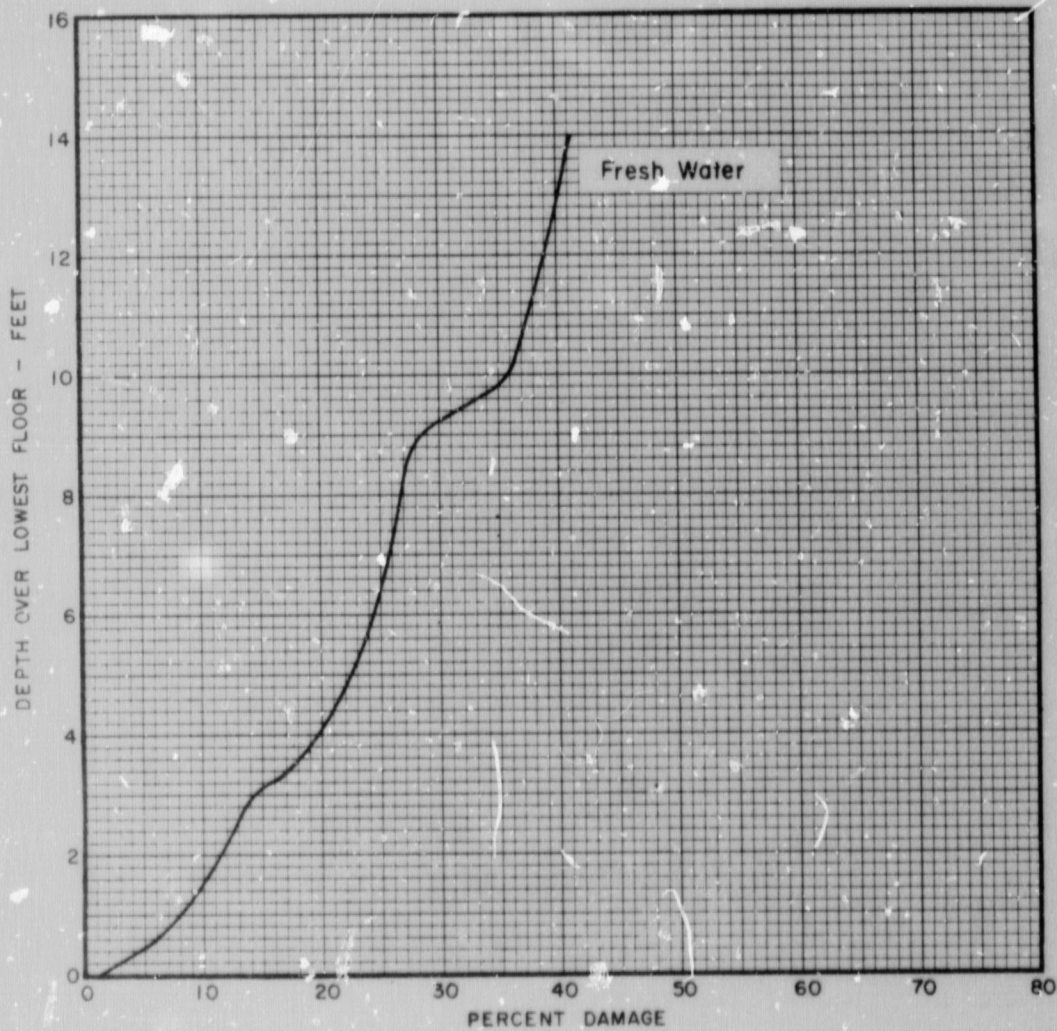
FLOOD INSURANCE STUDY  
 JEFFERSON PARISH, LOUISIANA  
 GRETNA, LOUISIANA  
**DEPTH - PERCENT DAMAGE CURVE**  
**STRUCTURE**  
**TWO STORIES-NOBASEMENT**  
**(2N & 2NP)**

U.S. ARMY ENGINEER DISTRICT, NEW ORLEANS  
 CORPS OF ENGINEERS

APRIL 1971

FILE NO. H-2-25645



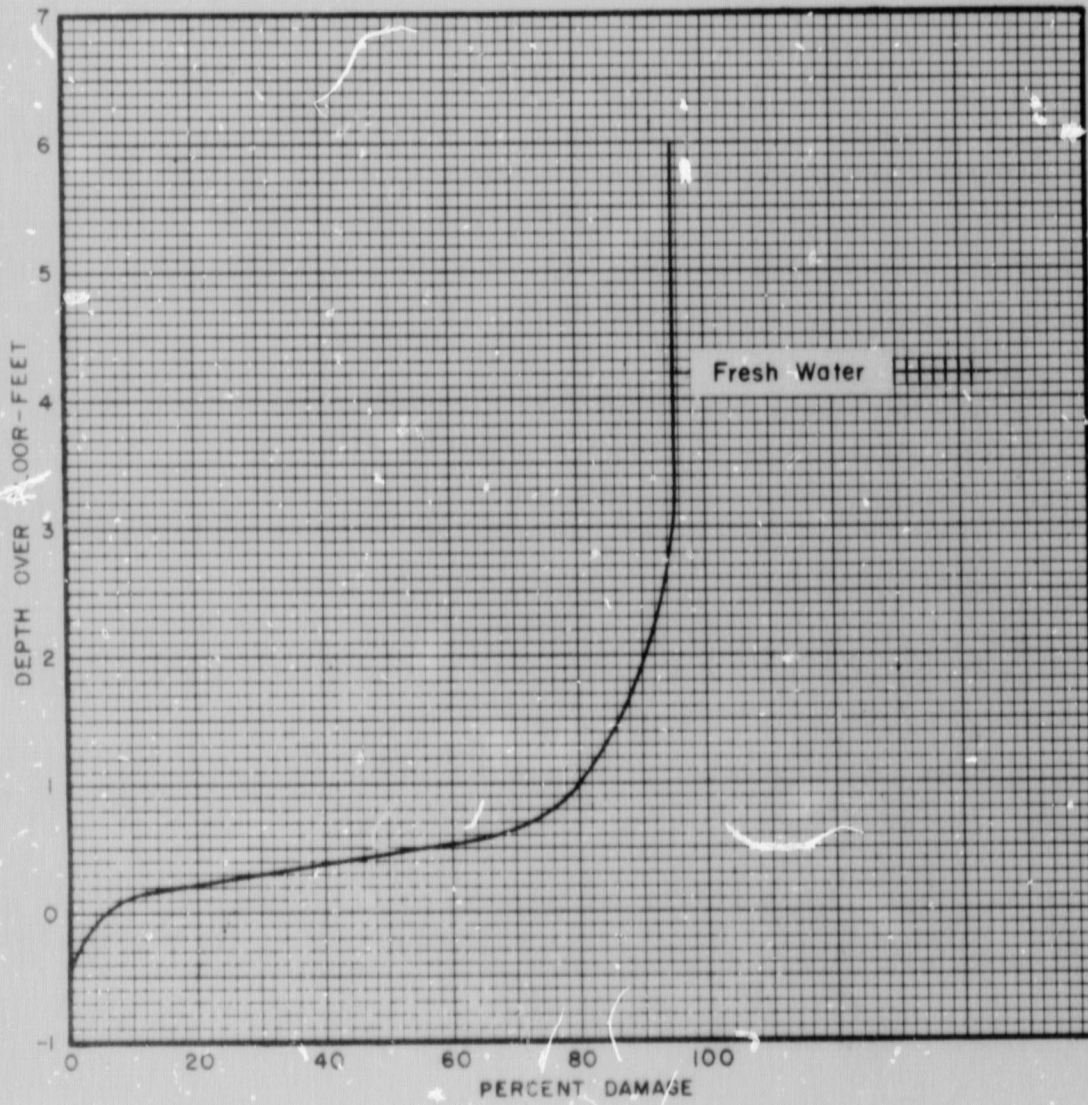


FLOOD INSURANCE STUDY  
 JEFFERSON PARISH, LOUISIANA  
 GRETNA, LOUISIANA  
**DEPTH - PERCENT DAMAGE CURVE**  
**STRUCTURE**  
**SPLIT LEVEL-NO BASEMENT (3N)**

U.S. ARMY ENGINEER DISTRICT, NEW ORLEANS  
 CORPS OF ENGINEERS

APRIL 1971

FILE NO H-2-25645



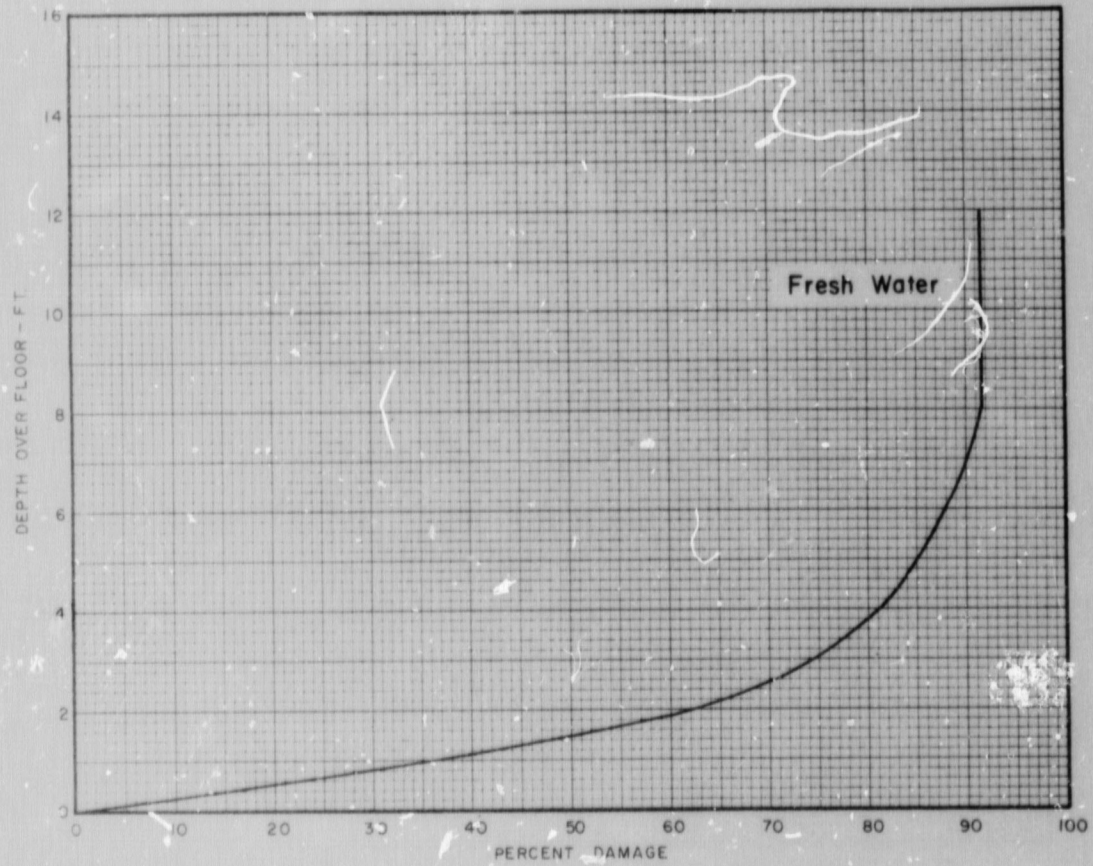
FLOOD INSURANCE STUDY  
JEFFERSON PARISH, LOUISIANA  
GRETN, LOUISIANA  
DEPTH - PERCENT DAMAGE CURVE  
STRUCTURE  
MOBILE HOME ON FOUNDATION (4)

U.S. ARMY ENGINEER DISTRICT, NEW ORLEANS  
CORPS OF ENGINEERS

APRIL 1971

FILE NO H-2-25645



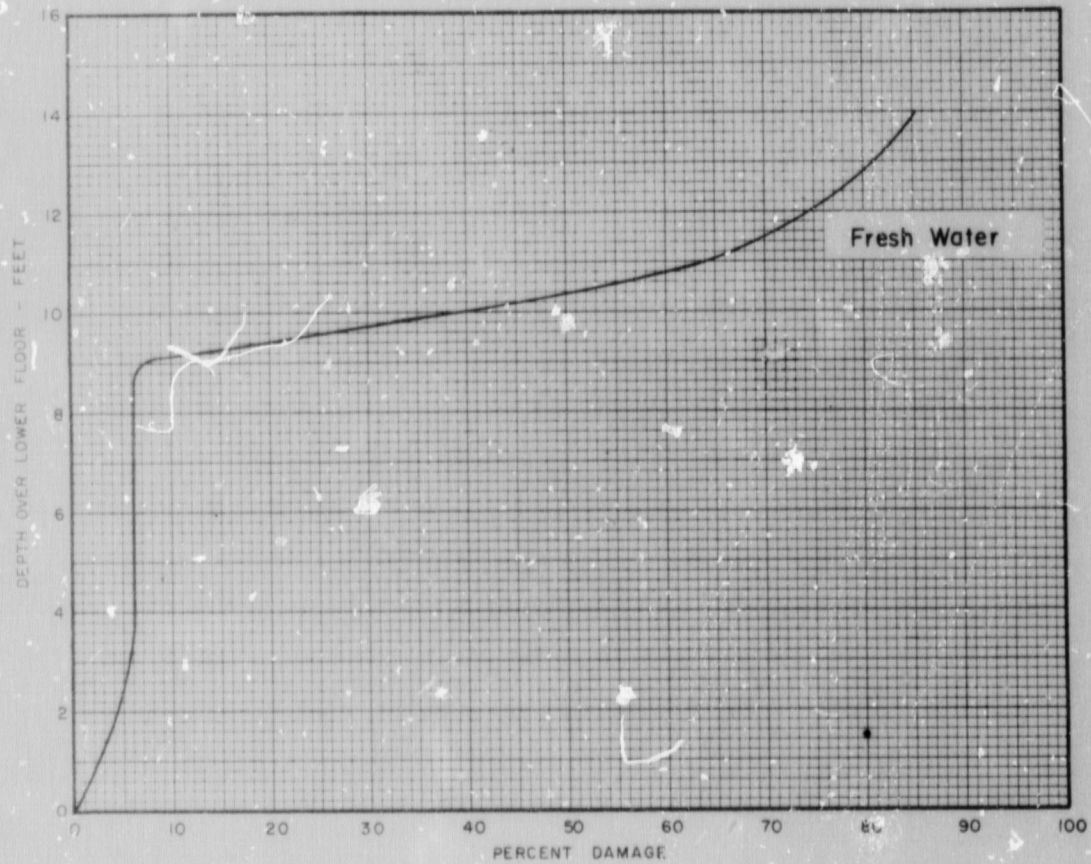


FLOOD INSURANCE STUDY  
JEFFERSON PARISH, LOUISIANA  
GRETNA, LOUISIANA  
DEPTH-PERCENT DAMAGE CURVE  
CONTENTS  
ALL ON FIRST FLOOR (F & FP)  
MOBILE HOME ON FOUNDATION (M)  
U.S. ARMY ENGINEER DISTRICT, NEW ORLEANS  
CORPS OF ENGINEERS

APRIL 1971

FILE NO H-2-25645

PLATE 10



FLOOD INSURANCE STUDY  
JEFFERSON PARISH, LOUISIANA  
GRETN, LOUISIANA  
DEPTH-PERCENT DAMAGE CURVE  
CONTENTS  
ALL ON SECOND FLOOR (S & SP)

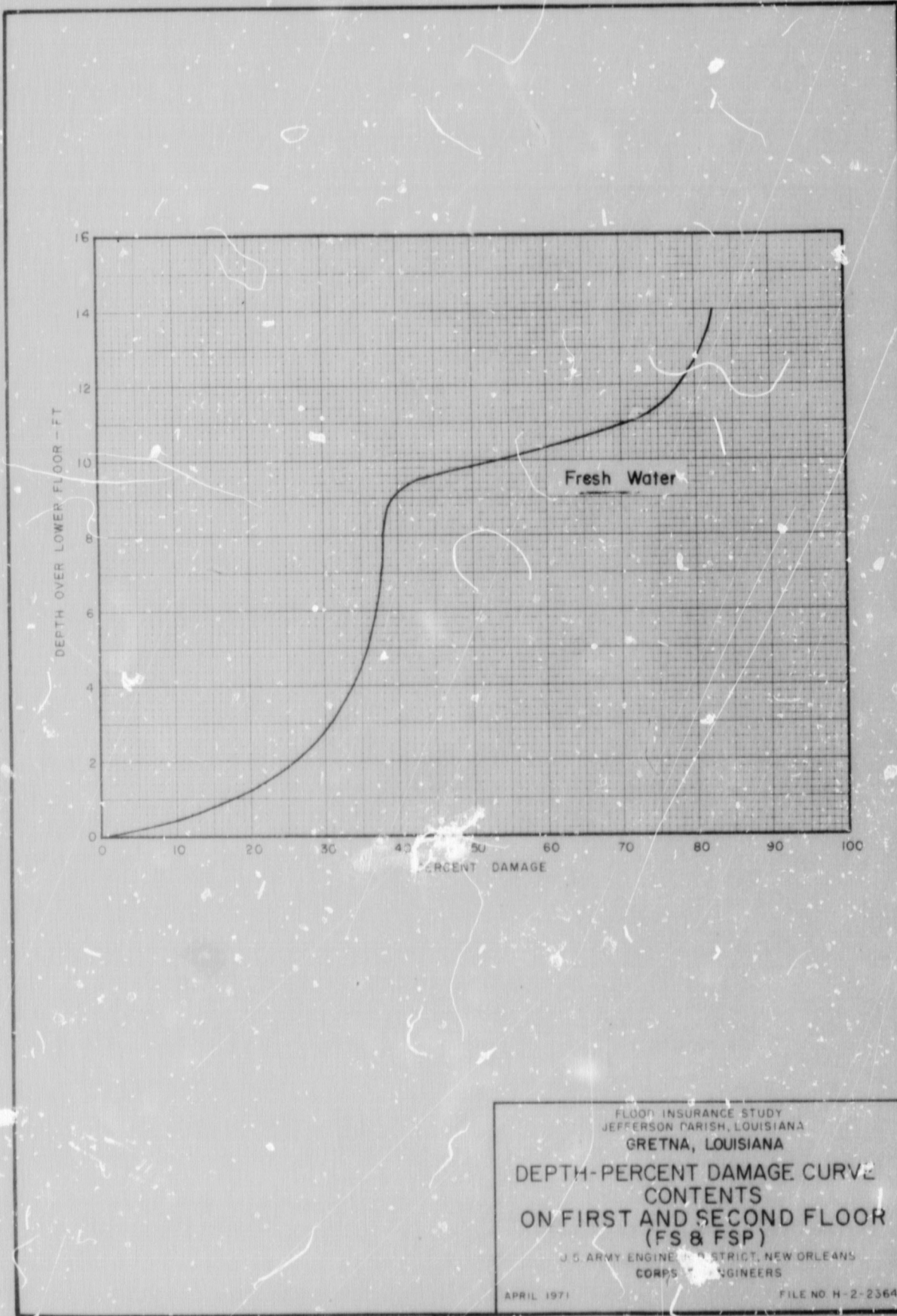
U S ARMY ENGINEER DISTRICT, NEW ORLEANS  
CORPS OF ENGINEERS

APRIL 1971

FILE NO H-2-25645

PLATE II





FLOOD INSURANCE STUDY  
JEFFERSON PARISH, LOUISIANA  
GRETNA, LOUISIANA  
DEPTH-PERCENT DAMAGE CURVE  
CONTENTS  
ON FIRST AND SECOND FLOOR  
(FS & FSP)  
U.S. ARMY ENGINEER DISTRICT, NEW ORLEANS  
CORPS ENGINEERS  
APRIL 1971 FILE NO. H-2-23645